

Ide Times




High Street Thursday Clap in support of NHS and other Carers

Photo Nigel Walsh

May 2020

FORGET-ME-NOT GARDENING SERVICES

A small team of local,
male and female gardeners.
Further information from:
Alison Creasy 01392 811889
or 07776 135944



Sara Monem APNT BCMA
Qualified Massage Therapist
07881 998314

Computer Repairs

Call Graham on:
01392 823959 07745 761561
Devon PC Doctor
Exminster
Speed Up Slow PC/Laptop
Virus Removal
Upgrades
Internet Problems
NO CALL OUT CHARGE
Major Credit Cards Accepted

D P Jones Plumbing and Heating

- Bathroom Design and Installation
(Including building works, electrics
ceramic tiling and underfloor heating)
Boiler replacement and system upgrades
- Full Gas Central Heating Installation
- Boiler Repairs, Maintenance & Servicing
- Kitchen Installations
- Landlord Gas Certificates
- Free Estimates

Exeter **01392 468660** Mobile **07866 385816**
dpjonesplumbing@gmail.com
www.dp-jones.co.uk

CARPETS SUPPLIED DIRECT

CARPET FITTING SERVICE

Tony Pym
6 Beverley Close, Woodwater
Lane, Exeter
Tel: **01392 251243**
Mobile: **07802 151163**

TOM JANSONU PAINTING and DECORATING

- Interior and exterior work
 - Cabinet painting specialist
 - 15 years experience in Exeter
and the Teign Valley
 - Tidy and reliable
- Please contact for an estimate .**
Tel: 01392 811956 / 07919676002 .
Email: tomas.bob@icloud.com .

THE IRONING LADY

For all your domestic ironing
needs - situated in Ide
Contact: Sharon Fleming
07588004615
sc.fleming@hotmail.co.uk

Exeter's Traditional Family Independent
Funeral Directors For Over 100 Years
M. Sillifant & Sons
Martin Sillifant & Son
A phone call will obtain our personal attention
01392-272688



**19-20 Holloway Street, St Leonard's,
Exeter. EX2 4JD**
www.sillifantandsons.co.uk

HAIR BY SUZY

Ide Village Hairdresser
20 years' experience

Tel: 077538 99729
Or 01392 439105

BEST CHIMNEY CLEAN Ltd

Jonathan Miles,
(APICS & HETAS approved)
Quillets, Little John's Cross Hill,
Exeter. Devon, EX2 9PL
Exeter (01392) 254120
(24 hour answering service)
e: hello@bestchimneyclean.co.uk

May 2020

I thought that I would be hard pushed to get enough material to make producing this month's Ide Times worthwhile. As it turns out I was sent enough for a bumper 24 page edition.! Just as well many of us have got a bit more time for reading! Very special thanks to all this month's contributors. I do hope this will inspire the rest of you to send in articles and photos, I would especially love to see more from our talented village children!



I imagine that lots of you are spending hours in the garden and so probably like me will have acquired a new best friend, who is not at all bothered by the need for social distancing, hence the choice of photo above (one of several beautiful photos sent in by Clare Taylor, including my absolute favourite, the blue tit on page 16). Strange times and more to come but the ingenuity, inventiveness and innumerable acts of human kindness are truly inspirational and help us cope with the sadness.

Please send items for the June Ide Times to me, Ann Boyce by 20th May annboyce@talk21.com Tel: 01392 213011

USEFUL NUMBERS

Community Policeman: 101

The Parish Church - Rev Mike Partridge 01392 491476 07751 725306
rev.mike.partridge@gmail.com and leave a message.

Congregational Church: Jackie Chadwick jacky.c@talktalk.net

M.P. Mel Stride: 02072 197037 melstride.mp@parliament.uk

Community Shop Opening Hours: (Tel. 410035)

Monday – Friday	8am – 12 noon and 3pm – 6.30pm
Saturdays	8am – 1pm
Sundays	9am - 12 noon

Post Office Opening Hours

Monday - Friday	9am - 11.45 noon & 3pm - 5pm
Saturdays	9am - 12 noon



The Mobile Library will be not be operating during the lockdown.

IDE PARISH COUNCIL

Idevillage.org.uk

The Parish Council has now met “virtually” twice, using Skype, firstly on 18 March for a briefing, as legislation wasn’t yet in place for us to make decisions remotely. To deal with matters needing action left over from 18 March, we then Skyped a full, extraordinary meeting on Monday 20 April 2020, under the new regulations of the Coronavirus Act which allows councils to meet not in person, but still in public, to vote live online and to take decisions. Councils are wisely advised that remote, online meetings are an emergency provision, to be used for urgent or outstanding matters that cannot or should not wait; and that we should avoid starting new, involved projects during the Covid-19 emergency. We will continue to meet remotely during the lockdown on the dates already planned, and members of the public are invited to join the meetings using Skype.

The Council’s Emergency Planning Group has joined forces with the Community Shop and Post Office, Ide Angels Volunteers and St Ida’s to form a **Covid-19 Emergency Working Group**, which meets remotely by Zoom, chaired by parish councillor Paula Burton Perrett. Astonishingly, the shop and Post Office have managed to stay open by re-formatting: making deliveries to vulnerable or shielded residents in the village, maximum one customer inside at a time, most customers remaining outside, shopping lists picked off shelves by an Angel volunteer, 2 metre floor tape markings, using a wireless card machine, lots of sanitizer, using the hall for a warehouse, and making six car journeys instead of one a week to Bookers. The Council secured emergency Prompt Action funding from Devon County Council to assist with some of the shop’s additional expenses. And at Monday’s meeting, we expressed admiration for the courage, warmth and support that has enabled the Shop, the Post Office and Ide Angels to provide such a wonderful service to the village.

On behalf of Ide residents, the Parish Council thanks the volunteers and staff involved in running the Shop and Post Office, in the many tasks and roles required, for their work, spirit and generosity. It’s no exaggeration to say that, with the pubs, churches, hall and play area shut, unable to visit each other in our homes, unable even to put an arm around the shoulder of a friend in distress, the Shop and Post Office are our community’s vital focal point during lockdown.

The Council’s working groups - Emergency Planning; Weir Meadow Recreation Ground; Pynes Community Orchard; and Climate Emergency - have not met during the emergency, but work behind the scenes continues. We have fully resolved the issue of disputed ground on the dismantled railway strip on the northeast boundary of Pynes Orchard; and now have a draft of the option to purchase agreement for scrutiny. Meanwhile the planning application documents for change of use and phase 1 of the development at Weir Meadow have been finalized for submission.

Two councillors have decided to step down this month. We thank Carolyn Tysoe and Jenny Lundh warmly for their contributions and work during the year. Cassa remains the chair of the Allotments Association; and Jenny will continue as a member of the Climate Emergency working group. So two vacancies offer themselves on the Parish Council, the most local tier of local government. This is an opportunity to serve and represent your community to improve the quality of life in the parish. The position of parish councillor is voluntary, elected and unpaid. You would be required to attend six bi-monthly meetings a year. Training will be provided. If you would like to be considered, please contact Mel Liversage or Nick Bradley in writing or by email. And if you would like to talk it over before committing yourself, please give us a ring.

Planning Applications

New applications:

20/00269/FUL Maple House Old Ide Lane – Conversion and Extension of existing garage to form a granny annex.

Updates on current applications:

20/00203/FUL Cobbe House, Station Road – Replacement of Porch – supported with comments re the roof light.

20/00390/AGR HOLCOMBE BURNELL Springfield Bakers Hill Agricultural Storage Shed
Councillors felt that this was not supportable in its current form – too large a building to be next to a narrow lane that is used as a public amenity.

20/00061/LBC 30 High Street Ide Replacement of front roof.

18/01024/MAJ Springwell Nursery Ide Erection of a new Garden Sales Area Building including Café Restaurant, Storage Warehouse, New Public Car Park Area. **STILL AWAITING A DECISION**, revised plans have been submitted.

19/01896/ Ide Blacksmith Cottage, 1 Fore Street – single storey extension. Refurbishment of existing rear extension including new doors and windows, and re arrangement of existing PV panel on roof.

The next IPC Planning Committee meeting will be held remotely on Tuesday 28 April 2020 at 7.30pm.

The next **Parish Council** meeting, with its **Annual Meeting**, will be held remotely by Skype on Wednesday 13 May 2020 starting at 7.30pm.

Meetings of the Parish Council and its Planning Committee are held in public and you are welcome to attend using Skype during the Covid-19 emergency: please contact the clerk or chair beforehand. There is time allocated at the start of the meetings for public participation. If you have an issue you would like the council to discuss, please contact the chair or another parish councillor. Requests for items to be considered for inclusion on the agenda should be made at least 14 days before the date of the meeting. The first ten minutes of a Parish Council meeting are open to the public to raise possible items for future meetings; or to comment on items on the agenda for that meeting.

Parish Council contact details:

Chair: Nick Bradley, Smallridge House, The Green, Ide, EX2 9RT 01392 420616 ncabradley@gmail.com

Clerk: Mel Liversage, 20 Little Johns Cross Hill, EX2 9PJ 01392 259024 ideparishclerk@gmail.com

Cemetery administrator: Sarah Tiley 01392 217142 saraht61@btinternet.com

PS. A big thank you to Kevin Taborne for mowing the pitch area on the green during his permitted hour of exercise!

Ash dieback

Ash trees make up around 12% of Great Britain's broadleaved woodland and are an important part of parks, gardens, hedgerows and roadside margins. It is the 3rd most common tree in the UK. Teignbridge Council alone manages 3,800 of its own ash trees.

What is Ash dieback? Sometimes known by its scientific name 'Chalara', it is a highly infectious fungal disease that affects the European Ash (*Fraxinus Excelsior*). It originated in Asia, where Ash trees there are of a slightly different species and aren't seriously affected by the disease. Globalisation has, like Covid-19, enabled its spread. It is, once introduced, predominantly an airborne disease and as such it is not really possible to protect trees from the disease. Once a tree has been infected it will lose leaves, then branches, then is likely to die completely. Infected trees are also more susceptible to other diseases as they will be in a weakened state.

Which ash trees are affected? Virtually all, although a small minority of ash trees, currently thought to be around 6% of UK stock, will prove tolerant or resistant to the disease. Some infected trees have shown signs of recovery. Note that the ornamental 'Rowan Ash' (the one with the orange-red berries) isn't susceptible as it is not actually an ash but is in fact a member of the rose family.

What are the symptoms of ash dieback?

There are three main and easily-identified symptoms:

1. **Dead or dying foliage** – not to be confused with ash keys, bunches of dead leaves are clear signal of the infection. However, do note that Ash trees are one of the later trees to come into leaf, so if a tree does not have much foliage yet, this doesn't necessarily mean that it has been infected. A healthy tree should, though, be in full leaf by June.



2. **'Crown dieback'** – growth of leaves becomes sparse in the crown area.



3. **Lesions** – These are generally elongated, and frequently occur at branch junctions.

What should I do if there is an affected tree within my garden or elsewhere on my property?

If you think you have an affected tree you don't need to immediately have it removed. If the tree is small, or if it is not going to cause any danger to persons or property if it loses some of its branches or even falls over then it can be left. Deadwood is much loved by our native fauna of all types. It might even be that your tree proves resistant, and if so then its offspring will help regenerate the continent's ash tree stock once the tree has recovered.

However, should you have any concerns over safety of persons or property that may be posed by diseased tree, then it is best to consult a qualified tree surgeon, who can advise accordingly. In the village Stuart Brooking has a working knowledge of dealing with Ash dieback and has agreed to offer free advice on behalf of the parish council should you be worried about a particular tree, and we thank him for this. Stuart can be contacted on 07801 789 215 or email stuartbrooking@ambios.net

Note that there are also legal considerations regarding removing trees or large parts of them, especially if your property is within the Ide conservation area. Teignbridge District Council can advise here - 01626 361101 is their phone number.

Pete Bishop & Mark Thomas, Ide Parish Council



IDE MEMORIAL HALL

The Hall AGM should have taken place in May but owing to the present coronavirus restrictions this has had to be postponed. At present the hall cannot be used for meetings, parties, etc., but we are pleased that it is being of use to the shop to store boxes for home deliveries, and also for excess stock. We were also pleased to

offer the use of the hall fridge/freezer when one of the shop chillers failed to function properly. The solar panels on the rear roof of the hall have, of course, been providing electricity for the shop during the recent sunny weather.



You may be interested to know that the hall's total income for the year ended the 31st March 2020 was £6,957.49, which was mainly from bookings. The outgoings amounted to £4,800.25. This meant that the hall made a profit of £2,157.24 during the year. We already had £2,218.61 in the bank, which means we started the new financial year with £4,375.85, meaning we shall be able to manage without any income from bookings for several weeks. However, we hope that it won't be too long before things get back to normal.

If you are interested in booking the hall for an event later in the year, please contact Carol Whitehart on 01392 213608.

Brenda Spivey



They Go in One By One

As the animals went into the ark two by two – now customers come into the shop one by one during these challenging times!

After trialing many ways to keep the shop running and changing routines and procedures even by the hour as the situation changed, we have now settled into a hopefully very safe and workable solution to get us through this crisis time.

First off all a huge thank you must be said to all the many, many volunteers that have kindly come forward to help over this period. It is great to see new faces young and old helping out and it would be good if many of the volunteers could continue when we are through this time. It has also been great to see Ide Angels go into action and what an asset they have become to the shop with covering deliveries etc. What a keen bunch of volunteers they are – they make us grin as they all race to be the first one to do the delivery and each one trying to get there faster than someone else – brilliant.

It is of course sad not to be seeing our older regular volunteers and we miss them a lot and look forward to seeing them very soon.

The shop has been very, very busy and it has been great to help out the village at this time and to see so many new faces in the shop, who we hope will continue to shop with us when life returns to 'normal' now they know what an asset the shop is to the village and how well stocked it is.

The Post Office has also been very hectic at this time as people post a lot more letters and parcels to their friends and family as they cannot see them.

Further thanks are due to the Village Hall Committee for kindly allowing us to use the Village Hall during this time to store all the extra stock we are needing to keep the shelves stocked at this time.

Even more thanks are due to the great cleaning volunteers who are doing even more to help make sure the shop is kept clean and safe at this time when we are so conscious of the importance of cleaning and hygiene.

It is good that in the main we are still able to source most of the lines we normally carry in the shop plus some extra ones to meet needs at these difficult times. Our suppliers have been great in meeting our order requirements and increased orders during this very busy time for us. We do thank you for your patience if you have to wait a while if you come to the shop as we allow people in one at a time to maintain safe distancing and to allow us to sanitize etc. between customers.

We have been running fun competitions and more Facebook posts during this time to keep people informed on what the shop is up to and to keep in touch with people who are not venturing out at the moment and just to provide a bit of light relief in these challenging times.



'Thank so much to Ide Community Shop for organising the fun Easter Colouring Competition...Amelie, Joseph and Jackie Chadwick wrote a wonderful story for the Easter Writing completion.

As always the children of the village put great effort into creating some wonderfully coloured pictures for the Easter Colouring Competition and Jackie Chadwick wrote a wonderful story for the Easter Writing completion.

We look forward to life returning to normal and wish you all the very best if you are self isolating and look forward to seeing you soon.

Zetta King

Spring Tips

You may be aware that we are currently not only in lockdown, but also in what is known as the 'hungry gap' because April is the leanest month of the year for Britain's farmers with the winter stocks of root vegetables, potatoes and brassicas tiding us over until the arrival of fresh spring produce in May and June. The good news is that the end is nigh because the star of the Spring show - British Asparagus - has hit the shops and is now readily available. Of course it is divine when lightly steamed or griddled and smothered in salt and butter, but also wonderful in a risotto and the stalks can be used to make delicious creamy green soup. As you can guess – I'm a big fan! Other players on the Spring stage are aubergine, beetroot, chicory, chillies, elderflowers, lettuce, marrow, new potatoes, peas, peppers, radishes, rhubarb, rocket, samphire, sorrel, spinach, spring greens, spring onions, strawberries and watercress. Make this the year that you do something exciting with elderflowers – champagne anyone?



Carolyn Tysoe

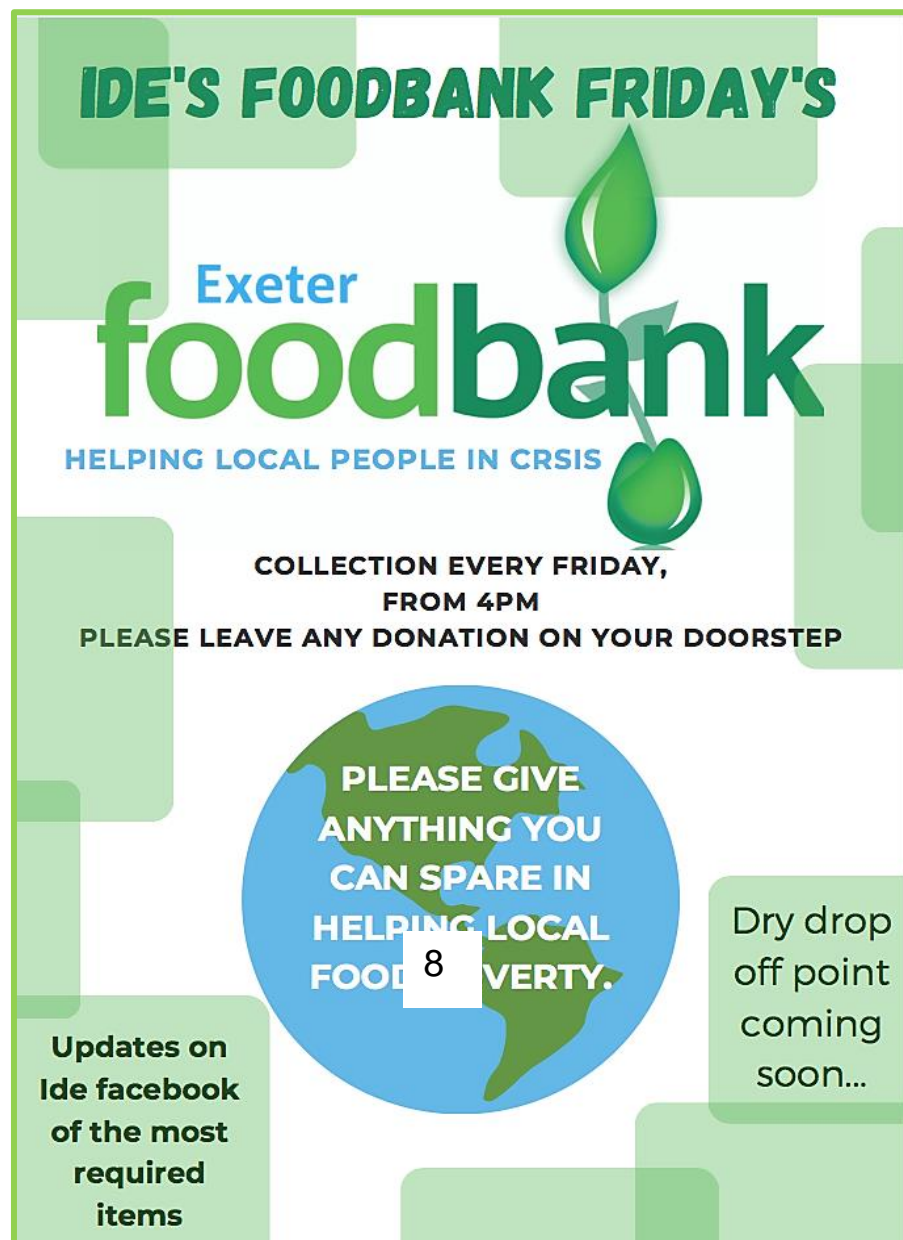
THE JUBILEE CLUB

I hope you are all keeping well and not having too many difficulties during this difficult period of 'shut down' due to the coronavirus. It has been good to speak to a number of you on the phone. We hope that it won't be too many weeks before we can meet again and enjoy each other's company.

I have just learned that sadly Bill Piller has died. He together with his late wife, Mavis, were founder members of the Jubilee Club. He was an active member of the Club and could always be seen sitting in the right hand corner near the stage, always smiling. His health deteriorated in recent years and he moved to a care home. He and Mavis lived at Halscombe until he retired. He was 93 years old.

Keep safe and keep well.

Jean Hoskin



CLIMATE and ENVIRONMENT EMERGENCY

Climate Appreciation During Isolation

With another daunting three weeks ahead of us, it's easy to be pessimistic about the future. What the future holds is unknown and therefore scary, it's hard to see the good that's come from our time in lockdown and the Covid-19 outbreak. However, as they say, 'the grass is always greener' and in this case that's surprisingly accurate. With the economy on hold, travel bans in place and only key workers moving around, this has led to a sudden drop in carbon emissions. Globally, China's emissions fell by 24% since the start of the year and in the European Union GHG emissions plummeted by almost 400 million metric tonnes just this year. Air quality rises in many of the world's worst polluted cities such as Los Angeles, Mexico City and Beijing where the constant smog is clearing, and blue skies are taking over, are providing a rare and wonderful sight for their 21 million residents.

As for Ide, I think everyone is appreciating the more time we have to do the little things, whether that's a sofa day, cooking fresh food or going on walks in the endlessly stunning countryside we are fortunate enough to live within. Walking 'Around the World' you would never think we are living in a global pandemic in a country on lockdown as the birds sing and Spring arrives. You could even believe you live far from any city, as Ide's never been quieter with the lack of noise from the A30 and Ide high street being safe place to walk without the constant flood of cars. We are yet to see wildlife filling our streets like in some other villages, but fingers crossed.

When the economy starts back up and we begin the new 'normal', this quietness will not remain and neither will the improved air quality, however this period of shutdown has proven that drastic action and change can cure a crisis.

With all future events cancelled or postponed, including the Ide Climate Emergency Working group's it's hard to keep proactive when talking about the environment, since time spent outdoors is limited. Therefore, it's important to make this time worthwhile and useful to not only yourself but our striking surroundings which have been a safe haven during these bizarre times.

All of us lucky enough to stay at home are forever grateful to our key workers who are keeping us safe and the world turning.

Georgina Ambrose

ICEWG



1930's Traffic in Ide — or Lack of it

August 1988

During a recent visit from my 12-year-old grandson he remarked on the large volume of traffic passing through the village. This set me thinking back to what it was like when I was his age.

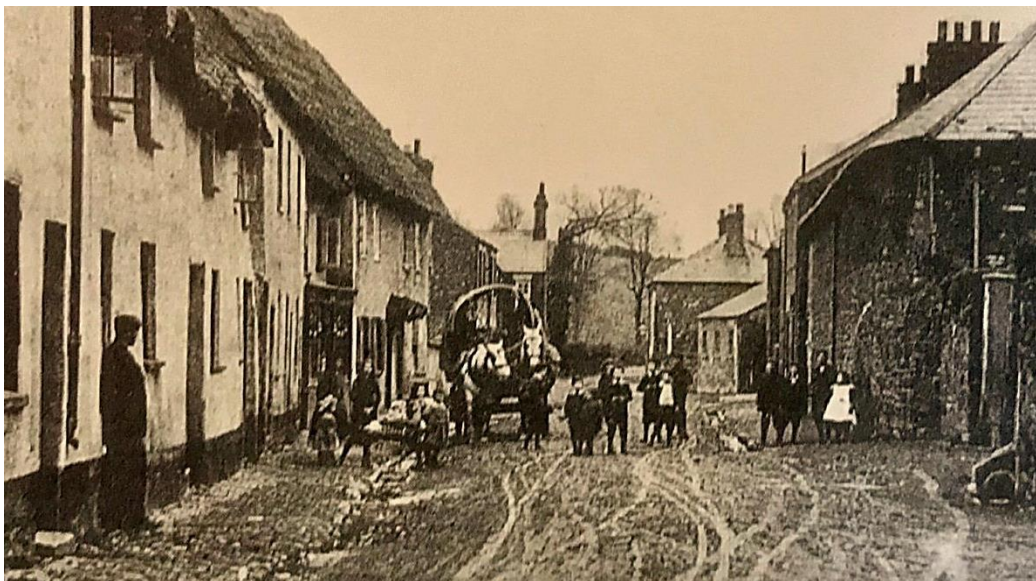


Actually there was very little traffic. Just the odd steam lorry travelling to and from the stone quarry at Dunchideock. A car or a motor bike was a rare sight, and even bicycles were very few.

There were more horse drawn carts than anything else and they were no problem to us children who played our games of football, cricket, hopscotch, marbles, skipping, trundling hoops etc in the streets, without any fear of being knocked down.

On market days the occasional herd of cattle would come rampaging through the village attended by drovers and well trained dogs. Plenty of choice language would be heard if the animals were proving difficult to control, but that was all accepted in good spirit.

In the evenings the streets were generally free from traffic, but there was one regular horse drawn vehicle which used to pass through the village at about 8 o'clock. This was 'Warren's', the bakers, bread wagon returning from delivering in the Dunchideock



area. In the winter months it was quite a sight to see the wagon, lit by oil lamps, careering through as fast as its pair of horses could gallop. It amazed one, by the way it rocked and rocked from side to side, that it didn't turn over.

The roads were in a pretty rough condition in those days. This was better for the horses, as it helped to prevent them slipping about with their metal shod feet. In icy conditions the horses shoes were usually 'frost nailed' by the local blacksmith, to give them a better grip. Raised chisel edged nails were used for this, replacing the normal shoe nails.

The streets of Ide were very poorly lit at night by gas lamps, spaced at strategic points along the streets. Groups of children used to congregate under them to chat and play. It lives in my memory the large number of bats, which used to swoop in and out of the gas lights. They seem to be such a rare sight nowadays.

As the years passed by so an increasing number of motor vehicles appeared. Miltons Buses opened up a service serving Ide and Dunchideock with Exeter. Arthur Miller, the vicar's son, set up a garage in the yard of the Railway Inn, now known as the Poachers.

Today we have got to a situation where families have got two and even three cars. It is a problem to foretell what the outcome of so much traffic using our very narrow streets will be.

It is nice to see a few horses still about, but they are part of the leisure scene now and not the rippling muscled cart horses which used to haul the quarry stone, farm produce and great bulks of timber etc, so well managed by their handlers. Real rural hard work, sweat and toil, which is hard to imagine by the uninitiated in this age of mechanisation and high technology. I am glad that I was part of it and able to appreciate that things were not always so easy and taken for granted as they seem to be today.

Frank Moore

Frank Moore was a regular and much valued contributor to the Ide Times for many years

EXCITING PLANS COULD TRANSFORM IDE – IN A GOOD WAY!

A summary of the Presentation given by Ide Parish Council Chair, Nick Bradley to the Weir Meadow Open meetings held on 22 and 26 Feb 2020

Background The parish council is, we hope, about to sign an agreement with the Church Commissioners (CCs) for England giving us a three year option to buy Weir Meadow, the Northern Fields and Triangular Field.

We also expect to submit an outline planning application in March for change of use and recreational development of Weir Meadow.

Both of these are big actions, and have been several years in the making. Both have been approved in principle and in public by the parish council.

On 8 Sept 2016, three and a half years ago, we held a public meeting here, attended by 65 people, about development plans for Pynes Farm Yard, also owned by the CCs. The Neighbourhood Plan (NP) was in full swing, and several residents spoke of their keen desire for some public green open space in Ide for sport, recreation and relaxation. As a result the PC decided to try to acquire Weir Meadow for that purpose.. Exactly one year later, the CCs agreed to sell us the 6 acre Meadow for £40,000 plus VAT.

In June 2017 the parish council set up the Weir Meadow Working Group to gather ideas for the recreational use, produce a draft layout for the NP; and fund raise to acquire the land, then develop the agreed facilities.

Why do we want to buy the Northern Fields?

One of the vendor's conditions was that they insisted on maintaining right of access for agricultural vehicles and plant across the Meadow to the Northern Fields which they also own. We spent the next year trying to persuade the CC, that the traditional access down College Lane could work. But we failed. So we investigated the feasibility of building a bridge over Fordlands Brook. The estimates we obtained were prohibitively expensive.

So last year the PC resolved to try to buy the two Northern Fields outright, to overcome the problem of access. The CCs agreed in principle. We had them valued by two independent valuers; and on 11 October 2019 the commissioners accepted our offer of £130,000 plus VAT for the 17.46 acres, making £170,000 for the whole parcel.

Where are we now? We are awaiting a draft three year Option to Purchase Agreement, which will allow us three years from the date of signing to raise the money to buy the land. Just to buy the land, please note. We can exercise that option at any point during the three years. It may be extendable if after three years we are still short.

This represents Phase I of the project – getting the land. Phase II will be developing it and kitting it out, and will require a fresh fund raising effort, targeting some different sources.

THE BIGGER PICTURE is that owning these four fields will give the village permanent protection against unwelcome development at the margins of the current built environment. With Pynes Orchard, the other large village project to purchase land, this crescent of protected land will become an increasingly precious local benefit over time.

LAYOUT

You'll see the proposed layout on the drawings, which form the basis of our application for outline planning permission. It provides for football, cricket, a MUGA for netball, five a side and tennis, a play area, a BMX track, parking and a pavilion; and footpaths. Triangular Field has recently been included as part of Weir Meadow, and will be a wild public area ideal for dogs. The key point is that without planning permission, we cannot move forward with fund raising; with it we can. The details of the layout will not be set in stone by the application. TDC know what our ambitions are. They understand this is a two phase process, and are open to modifications later. The key is getting the land – without which we can do nothing. And in turn, outline planning permission together with the option to purchase agreement, hold the key to getting the land.

FUNDING OPTIONS

There are three main sources for capital costs:

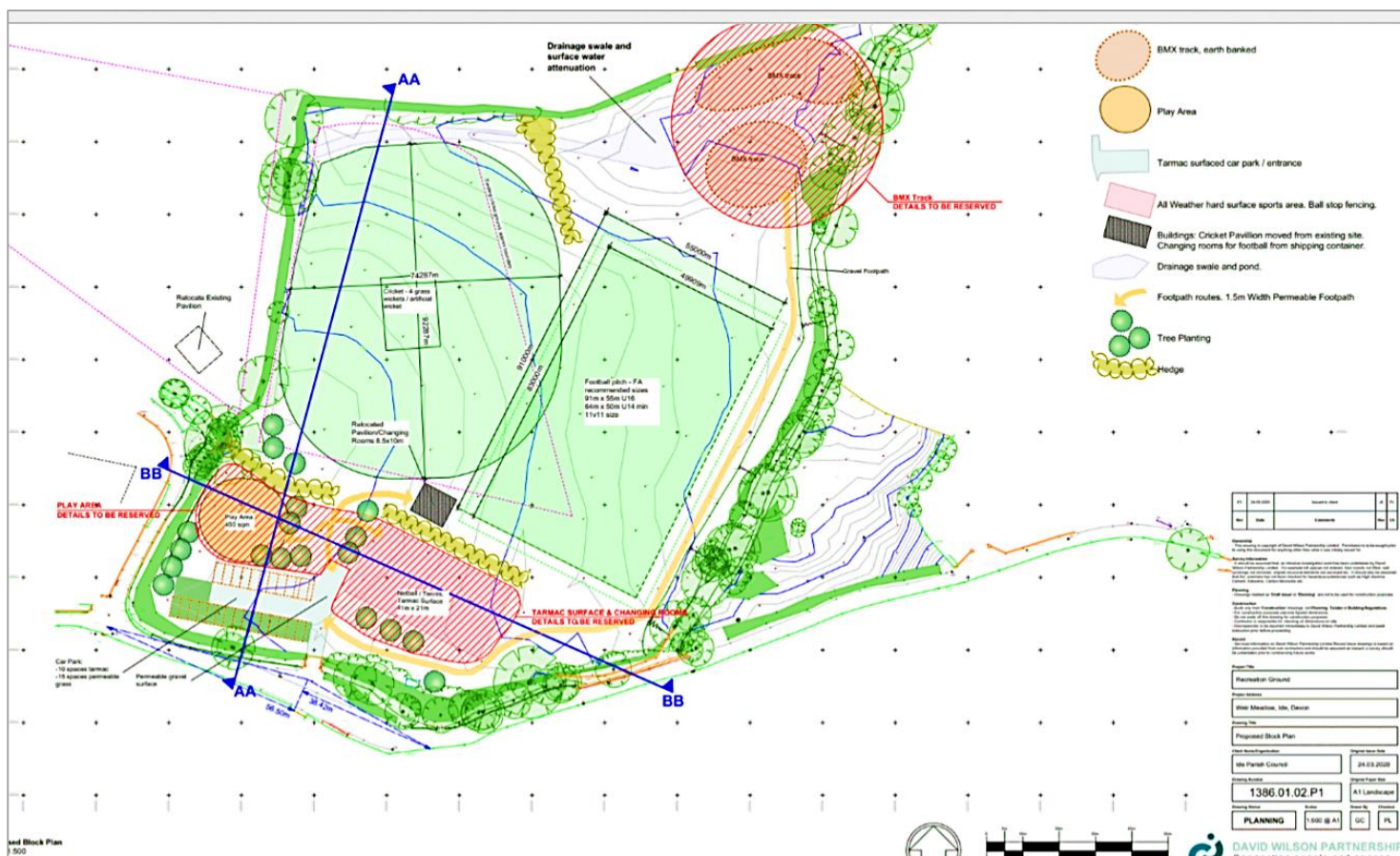
- Private donation
- Grant giving bodies, National Lottery, sporting organisations
- Borrowing from the PWLB (Public Works Loan Board), a government backed body specifically set up to lend at preferential rates to public organisations, in particular parish councils.

Ide PC's suggestion is to allow one year of the three year option to raise money by donation and grants; and if necessary then to raise the rest by a loan in the following two years.

As an illustration, if we were to take a 50 year loan for £120,000 from the PWLB, and decided to pay it back by increasing our precept, and thus raising council tax - a common and recommended method – it would need in rough terms a £1 a month increase in council tax for the average band D household. This might be reduced by income generated from rent from sports clubs for the grounds, and rent from any tenant farmer on the Northern Fields. This is illustrative only.

HOW TO USE THE NORTHERN FIELDS?

The simplest option is to let them to a farmer. But there are other possibilities: the council would own enough land to qualify as a farmer itself and apply for the Stewardship scheme, or whatever will replace it under the new Agriculture Bill, which could give a better return than renting. We could plant trees under current woodland schemes. We could put in solar panels, screened from view by trees, particularly at the NW section which is out of line of site from virtually everywhere. The fields would make a great vineyard. We will certainly make a footpath through them to College Lane.



THANKS

Particular thanks to four people who have given their professional services pro bono:

- Stuart Brooking – arboreal survey for the planning application
- Julian Perrett – wild life and ecology survey for the planning application
- Pete Skinner – agricultural advice and land valuation
- David Howe – acting as the parish council's solicitor on this project

Also thanks to the members of the working group – in particular Richard Cloke and Stuart Brooking for shouldering in turns the task of chairing that group.

Thanks also to those who have contributed so far to the start up, professional and planning costs required get us to the point where we can go out to raise serious funds: individual donors, the Ide Family Fun days, Ide Twinning, Ide Growers, Ide Aloud, Ide Community Shop, our County and District councillors Alan Connett and Andy Swain from community funds, and the Parish Council itself from its precept.

SAINT IDA'S CHURCH



Services

We are beginning to get used to Sunday and mid-week Services via Zoom, when we join with members of Alphington Church and Shillingford. You will find everything we do on our St Ida's web page at: <https://www.achurchnearyou.com/church/8771/> The Rev Mike Partridge is also emailing a number of us with the Zoom link for the Sunday and Wednesday Services (the Sunday one is at 11am). His email address is rev.mike.partridge@gmail.com and he will be pleased to send you the Zoom link direct, if you email him.

At last Sunday's Service 73 computers/ipads were linked in, often with more than one person at each.

It is, of course, not the same as meeting together but it does mean that we are all helping to keep the coronavirus from spreading and we all hope and pray that things will get back to normal in the not too distant future. Meanwhile, keep safe and keep well.

Easter

We hope you all had a very happy Easter. The Easter cross was put outside the Church door, decorated with small bunches of flowers, inviting passers-by to take a bunch home with them, which a number of people did.

Mothers' Union

The Rev. Caroline Luff has been emailing regular 'Thoughts for the Day' to Sue Campbell, which are being forwarded to Ide M.U. members. Do let Sue know if you would like to receive these.

We were very sorry to learn of the death of Marian Ames and send Fred our deepest sympathy. Many of us will have very happy memories of Marian. Born in Ide, she was baptized, confirmed and married in St Ida's, sang in the choir for many years as well as being one of the talented small team providing beautiful flower arrangements for the church.



Brenda Spivey

Marion Jessie Ames (nee Hallett) 1926 to 2020



Sadly, Marion died at her Care Home from the coronavirus on Tuesday April 15th. It is easy to see her, our Mum as the lady who had been tormented by the dementia that robbed her of so much of a later life, but before this she had been very much a part of Ide.

Born 16 February 1926 in Nappers cottage, which used to be right opposite Ide School, to Arthur & Annie Hallett, she was the youngest child of 8 having 3 brothers & 4 sisters with her childhood life soon a little further up the village at 1 St. Ida's Terrace.

Mum went to Ide School until she left at 14, her first job being at Ide House as a maid. WWII saw her joining the Land Army, originally being posted to a

farm at Holne on Dartmoor, but soon she was back in Ide at Haynes farm, and many a tale of cycling down that lane with legs out before stopping by the Perridge gate, rather than attempting the sharp turn at the bottom.

She met Dad at a Forces Canteen in the RAMM museum in Exeter, and they married at Ide 4 Jan 1947. After now 73 years of marriage they have been very proud to receive cards from the Queen. Their first home was a cottage in Fore Street, then in 1950 to a brand-new house at 5 The Hams, finally moving to the bungalow at 26 ca 2001/2

Once we children were a little older, she had a few jobs in the village. Always a keen cook, she used her skills in the school canteen, and later at the Old Mill café under Mrs. Trewartha. The job she probably enjoyed the most was assisting Bill Suthers at the Post Office.

Mum was a very talented gardener and both their houses saw lovely gardens. In later years she took up painting with a class at the Memorial Hall, especially scenes from Dorset which she had loved visiting after Dad's retirement, and she has left us with some lovely watercolours.

It was a very sad day when she had to leave Ide in 2018 but the physical difficulties of her dementia advanced to such a degree that residential care was the only option. However, her care at Barton Place, Cowley has been exemplary, with her smiles and hugs giving us the odd glimpse of the Mum that we really knew.

The cremation unfortunately will be a very limited ceremony, but we are very much hoping that once happier days return then we can all celebrate Mum's life with a more fitting Memorial Service at the Church where she had been baptised, confirmed, married and indeed sang in the Choir.

Finally, and certainly not least, a really big thank you to all those who are supporting Dad in these trying times, and also to all those who were so lovely in their help and support back when Mum was with us in the village she loved.

Richard, Elizabeth and Fred Ames

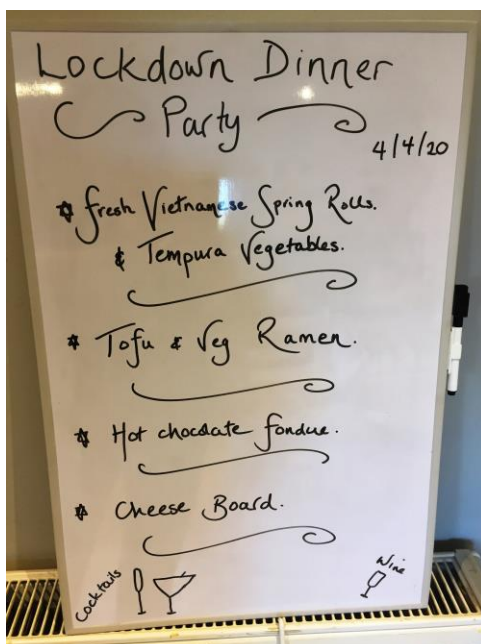
LIFE IN LOCKDOWN IDE

Thank you to all those who responded to our request for your photos showing some of the ways you are passing the time in lockdown. (Charlotte Ives and sons, The Morley family, the Morgan family, The Venables family , Eddie Thomas and Clare Taylor)

Hosting the wedding of Barbie and Ken



International Dining



The Morgan family in the Hams have had a different theme every Saturday night for dinner. We dress up, choose a different style of food and all help to cook



Ide Nature Watch





Being Artists



HOLLY'S GOOD FIT COMPANY

Welcome to the new 'not yet official' name of Holly's Fitness!

I've been wanting to change to this name for some time and feel now is definitely the right time to do so – mainly due to the fact my 'company' is more apt than ever. I chose this name as the whole of my business is centred around awesome individuals who attend my classes or one-to-one sessions. They are what make it – or rather, we as a team are who make it! Everyone is so different, yet everyone is so readily accepted into the group. Supportive, strong, motivational and most important... fun. That's us! We don't take ourselves too seriously yet work hard whilst having a good laugh and building great friendships.

I have recently set up a new Facebook group – Holly's Good Fit Company – which is a platform to help keep in touch, during this unexpected time of isolation, the group is there to help us provide each other with support and, well... company! And lockdown has stopped us from meeting up – we simply do it on the screen via zoom instead. These meet ups certainly brighten my day that's for sure.

Zoom sessions include Bootcamp on Saturdays at 9am, HIIT on Wednesdays at 7pm and the new 'Pins, Peaches and Packs' on Fridays at 8am. There is currently no charge for these sessions as I know times are hard for many of us at the moment. If you can pay a suggested donation of around £3.50 please do, but if you can't... worry not! The most important thing for me right now is that people keep moving, keep well and stay connected.

Sessions are for ALL fitness levels and equipment is not an essential, cans of beans will do the job just fine. So, come on wonderful people of Ide, jump on board the fit wagon and let's all be in good company... Good 'Fit' Company!



Please feel free to contact me if you have any questions or would like more information.

Holly Fivian

hfitnesstraining@gmail.com

07545671366

Stay safe folks! We've got this!

360 BUS TIMETABLE

Ide	7.51	10.01	12.39	14.34	
Exeter Bus Station	8.13	10.20	12.58	14.53	
Exeter Bus Station	8.35	11.15	13.15	16.15	17.55
Ide	8.53	11.33	13.28	16.33	18.13

WEST TOWN FARM NEWS



As we head into another few weeks of lock down it's been interesting to look back over the last month. The whole day to day life of the farm has changed. With no educational visits, events, art classes and shepherds hut bookings, my role has pretty much disappeared overnight. It felt strange how quickly I went from planning the next open day/ first wedding to standing on top of a pile of dung lifting off dirty tyres and a tarpaulin getting it ready for spreading onto the fields. However we have to change and adapt to our new roles/situations.

I've enjoyed getting out into the fields, grateful for the outdoors time. Perhaps this has something to do with all the glorious sunshine, but also I think now more than ever it's vital to get some fresh air. The lane from the farm to the village is full of wildlife and people. I know everyone has enjoyed seeing the pigs in their new home. It's been great seeing so many people out walking.

For me personally I've explored the country lanes around where I live more than ever before. I've discovered loads of footpaths and beautiful places. Makes you realise how much you relied on your car to go somewhere nice when actually there is a lot on our doorsteps.

Spent a lovely day preparing the greenhouse and planting the pumpkins in preparation for 'Apple and Pumpkin day'. Fingers crossed we are allowed to run the event.

For the moment we are finding joy in the little things and taking it day by day. If you think too far ahead worry and anxiety creeps in. For now it's the cows/pigs/pumpkins and laughing lots at a social distance.

The farm shop is busier and we've started a meat box delivery. Now it is even more important to support organic farming, for people, for wildlife and for the planet. The fragility of the UK's food system has been realised by many and there is hopefully an increased understanding that local food networks really do give us food security. Head to our website for more info on meat boxes and when we next have fresh meat.

The farm shop is open from 9am-4pm. We are accepting 'BACS' payments now you'll find all the details on the shop table.

Grace Barrington- Events and Meat Sales
West Town Farm, Ide, Exeter, EX2 9TG
T: (01392) 811257 |
www.westtownfarm.co.uk

With increased foot traffic past the farm, the pigs have been building up a new fan base, so we thought you might like a few close ups.



Printed by PhilipTucker parishmagazineprinting.co.uk

Estimates Free - Reasonable rates

**ALPHINGTON
ELECTRICAL
INSTALLATIONS**

R.T.Perkins, Electrical Contractor
19 Ide Lane, Alphington, Exeter.
Tel: 01392 274789
Mob: 07803 603696

**THE HUNTSMAN
INN, IDE**

Menus & info.
www.thehuntsmanninn.com
Serving food Tuesday to Saturday
And Sunday Lunch
Contact us on 01392 272779
or
info@thehuntsmanninn.com

PLUMBING & HEATING

GAS, OIL, LPG & SOLAR
INSTALLATIONS,
OIL TANK REPLACEMENT
BOILER SERVICING & REPAIRS
COMPLETE HEATING
SYSTEMS
BATHROOMS AND ALL
GENERAL
PLUMBING

COMPETITIVE
PERSONAL SERVICE
CALL

CLIMATE SOLUTIONS

Longdown 01392 811420

TEAM REMOVALS & STORAGE

01392 811 877
www.teamremovals.com

Over 20 years experience in:
Local – National and European Moves



Special rates for:
Senior Citizens,
Disabled,
Armed Forces,
Public Employees, and
Midweek Removals

Long and short term container storage

Professional, friendly
uniformed staff
No obligation quotations
Competitive prices
Part & full loads

Part & full packing service

BEST WESTERN LORD HALDON COUNTRY HOTEL

Dunchideock - Nr Exeter, Devon, EX6 7YF
Parties of all sizes welcome
Ideal venue for Weddings, Anniversary Parties & special occasions
Courtyard Restaurant
British Cuisine Evening on the second Thursday of each month.
Tel: 01392 832483.
enquiries@lordhaldonhotel.co.uk

M AND M TYRES & BATTERIES
UNIT 3, HENNOCK ROAD
MARSH BARTON EXETER
24 HOUR BREAKDOWN SERVICE
Tel: Exeter 217322 (Day)
I.W.Hunt M.D.Wells

hatsahead.com



07855833345

hatsahead@outlook.com

Bloofrog IT

PC Taking an age to load? A lifetime to get online? I offer a range of IT support and troubleshooting services including PC tune-up and optimisation, virus removal, website and logo designing

Andy –

07701020229/andy@bloofrog.co.uk

KIWI Painting & Decorating
Fencing
Gardening &
Goundworks

Maintenance

Local and Reliable

Call Rick:
07837 220637
01392 258452
warwick.farrar@yahoo.com

HOME ELECTRICAL SERVICES

We are only up the road and here for all of your electrical needs. For quality, reliable and friendly service call Jamie Gardner for a free quote.

NICEIC approved
01392 952952
homeexeter.co.uk



**Friendly Service and Good Food including
Sunday Carvery**

Outdoor and Indoor Children's Play Area

**Open Monday to Saturday 10am - 11pm
Sunday 11am - 10pm**

Fine
MEMORIALS
Your independent local Mason

11 HEAVITREE ROAD,
EXETER, DEVON,
EX1 2LD

TEL: 01392 250084



FOR A
FREE BROCHURE
CALL

0800 146887

SHOWROOMS ALSO AT:
IVERTON • MINEHEAD • BARNSTAPLE • BRIDGWATER
WWW.FINEMEMORIALS.CO.UK

**YOUR CARS IN THE RIGHT
HANDS WITH MBS**

We can ensure a swift and efficient service.

29 Marsh Green Road, Marsh
Barton, Exeter, EX2 8PQ Tel:
01392 49322. Email:
info@mbsmercedesbmw.com



MM Construction Solutions

Extensions, Conservatories
Kitchens & Bathrooms
Conversions, Lofts

Garages, Refurbishments
01626 779180 / 07920 770223
mmconstruction@live.co.uk
www.constructionsolutions.co.uk

MOTORSIDE

Garage Services

LTD

SERVICING REPAIRS WELDING MOT PREP

ALL MAKES OF VEHICLES

01392 811933

LEROY

FUNERALS

...PUT YOUR TRUST IN US

HEAD OFFICE
10 Alphington Road
Exeter, EX2 8HH
01392 255535

EXETER OFFICE
298 Topsham Road
Exeter, EX2 6HG
01392 211211

CREDITON OFFICE
94/95 High Street
Credition, EX17 3LB
01363 772326

leroyfunerals.co.uk



We are an independent, caring, family run practice, providing 24-hour emergency service. Surgeries available 7 days a week.



Four branches across the City of Exeter
Heavitree **01392 250066**
Alphington **01392 493999**
St Thomas **01392 250000**
Whipton **01392 465553**
www.cityvets.co.uk