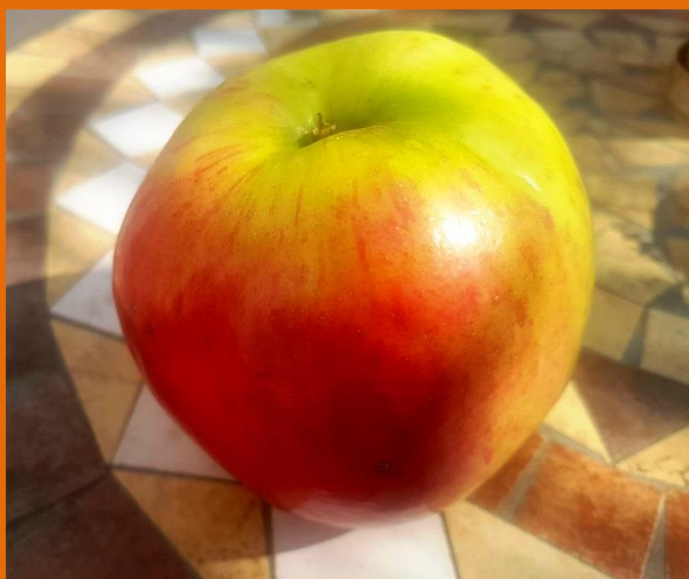


# *Ide Times*



Find out more about [Ide Apple Day](#)

pages 7-8

**OCTOBER 2020**



**D P Jones**  
**Plumbing and Heating**

- Bathroom Design and Installation (including building works, electrics ceramic tiling and underfloor heating)
- Boiler replacement and system upgrades
- Full Gas Central Heating Installation
- Boiler Repairs, Maintenance & Servicing
- Kitchen Installations
- Landlord Gas Certificates
- Free Estimates

**Exeter 01392 468660 Mobile 07866 385816**  
**dpjonesplumbing@gmail.com**  
**www.dp-jones.co.uk**

**TOM JANSONU**  
**PAINTING and DECORATING**

- Interior and exterior work
- Cabinet painting specialist
- 15 years experience in Exeter and the Teign Valley
- Tidy and reliable

**Please contact for an estimate .**  
**Tel: 01392 811956 / 07919676002 .**  
**Email: tomas.bob@icloud.com .**

**THE IRONING LADY**

For all your domestic ironing needs - situated in Ide

Contact: Sharon Fleming  
07588004615  
sc.fleming@hotmail.co.uk



“ Selling and Letting property in Exeter and surrounding villages with integrity and enthusiasm for over 20 years. ”

Call  
**01392 204 800**  
for a free sales  
or rental valuation

*Buds*

**FOR ALL YOUR GARDENING NEEDS**

Contact us on:  
07776 135944  
01392 920641  
info@budsgardening.co.uk

**Freshen up your home**

Dry Carpet Cleaning  
Upholstery Cleaning  
Hard Floor Cleaning  
Wooden Floor Cleaning  
Ultra Guard Protection  
Deep Clean / Sanitisation

**01392 240 842** or visit [zerodrytime.com](http://zerodrytime.com)



**Exeter's Traditional Family Independent Funeral Directors For Over 100 Years**  
**M. Sillifant & Sons**

**Martin Sillifant & Son**  
*A phone call will obtain our personal attention*

**01392-272688**



**19-20 Holloway Street, St Leonard's,  
Exeter. EX2 4JD**  
[www.sillifantandsons.co.uk](http://www.sillifantandsons.co.uk)

**HAIR BY SUZY**

Ide Village Hairdresser  
20 years' experience

**Tel: 077538 99729**  
**Or 01392 439105**

**BEST CHIMNEY CLEAN Ltd**

Jonathan Miles,  
(APICS & HETAS approved)  
Quillets, Little John's Cross Hill,  
Exeter. Devon, EX2 9PL  
**Exeter (01392) 254120**  
(24 hour answering service)  
e: [hello@bestchimneyclean.co.uk](mailto:hello@bestchimneyclean.co.uk)  
[www.bestchimneyclean.co.uk](http://www.bestchimneyclean.co.uk)

# October 2020

This month the centre pages are given over to a pamphlet 'Reduce, Reuse and Recycle' which can be removed if you want to keep it for reference. This has been produced by the Ide Climate and Environment Emergency Working Group set up by the Parish Council last year. These strange times have given all of us the opportunity to reflect on the need to look after our world rather than simply exploit it.



I certainly feel very fortunate to live in a community where so many are strongly committed to preserving our beautiful environment.

Ann Boyce

Articles for the November issue of the Ide Times should be sent to Brenda Spivey by the 20th October – [brendaspivey123@btinternet.com](mailto:brendaspivey123@btinternet.com)

## USEFUL NUMBERS

Community Policeman: 101

The Parish Church - Rev Mike Partridge 01392 491476 and leave a message or 07751 725306, or email: [rev.mike.partridge@gmail.com](mailto:rev.mike.partridge@gmail.com)

Congregational Church: Jackie Chadwick [jacky.c@talktalk.net](mailto:jacky.c@talktalk.net)

M.P. Mel Stride: 02072 197037 [melstride.mp@parliament.uk](mailto:melstride.mp@parliament.uk)

## Community Shop Opening Hours: (Tel. 410035)

Monday – Friday 8am – 12 noon and 3pm – 6.30pm

Saturdays 8am – 1pm

Sundays 9am - 12 noon

## Post Office Opening Hours

Monday - Friday 9am - 11.45 am & 3pm -

5pm Saturdays 9am - 12 noon



\*\*\*\*\*

\*\*\*\* **IDE MEMORIAL HALL** - to book the hall for your event/party please contact Carol Whitehart on 01392 213608.

\*\*\*\*\*

**The Mobile Library** See next page

\*\*\*\*\*

## 360 BUS TIMETABLE

|                    |      |       |       |       |       |
|--------------------|------|-------|-------|-------|-------|
| Ide                | 7.51 | 10.01 | 12.39 | 14.34 |       |
| Exeter Bus Station | 8.13 | 10.20 | 12.58 | 14.53 |       |
| Exeter Bus Station | 8.35 | 11.15 | 13.15 | 16.15 | 17.55 |
| Ide                | 8.53 | 11.33 | 13.28 | 16.33 | 18.13 |

The bus is still running but you must wear a mask and only a limited number of passengers can travel.

## Devon Mobile Libraries are back on the road bringing books to you.



To make sure that customers and staff are safe, we will only be offering a new type of contactless service for the time being. It's called Choose & Collect.

### **What is Choose and Collect?**

- a free delivery of up to 5 books or audiobooks per person.
- selected by staff based on your reading preferences.
- you collect from your usual mobile library stop.
- selections available for adults and children.

### **How do I make sure I get a Choose and Collect delivery?**

Even if we rang you to offer you your first delivery, we regret we can't do this every month. You

must contact us to order again. •Order at least 1 week before the mobile library visits your village

- You can check your Mobile Library's timetable on our website.
- Email or telephone the library where your Mobile Library (Exmouth Library) is based to make an order..
- Remember to tell staff you are a mobile library customer when you contact us.
- New customers are welcome, just mention you wish to join the mobile library.

**Time:** 11.50 – 12.30. **Dates:** Oct 19, Nov 16, Dec 14

\*\*\*\*\*

## **IDE PARISH COUNCIL**

[idevillage.org.uk](http://idevillage.org.uk)

**Traffic in Ide.** Thank you to the six residents who responded to the recent consultation. Two fully supported the proposal to move some parking spaces from the south to the north side of Fore Street. Two opposed the proposal; asked that large vehicles should take a different route; and highlighted Ide's general traffic blight. Two suggested moving one space only from south to north. The consultation highlighted a fresh issue of access to alleyways between houses, and dropped kerbs. Councillors were concerned about the safety of pedestrians from large vehicles, and the speed of traffic through Ide, especially High Street, as well as the problem for agricultural vehicles negotiating the narrows in Fore Street. The Council will seek further advice from Devon Highways on the related aspects of reformatting parking spaces, traffic speed, the safety of pedestrians and the safety of the exit from Drakes Farm in the light of this consultation.

The Council also decided to re-investigate the cost and feasibility of installing electronic traffic speed signs.

**The Planning Committee** discussed one new application on 15 September:

**20/00013/FUL 49 High Street, Ide.** Removal of chimney stack, insertion of street lights and first floor side window, installation of external wall insulation and enlargement of patio doors. Supported.

Planning applications awaiting decision:

20/00615/FUL - Land opposite Chillies, College Lane, Ide - five dwellings with garages and creation of new access. Ide Parish Council has objected to this proposal.

**20/01033/CLDE - Rollsbridge Farm, Ide EX2 9SU.** Certificate of Lawfulness for the siting of 3 mobile homes for residential use.

**20/00668/MAJ Land at NGR 289535 90312 Station Road, Ide (Weir Meadow).** Change of use to recreation ground.

20/00669FUL Land at NGR 289535 90312 Station Road, Ide (Weir Meadow). Single storey sports pavilion and associated parking.

20/00623/FUL – Stevens Farm Ide - Change of Use to Skip and Plant Park with associated hard standing. Ide Parish Council has objected to the proposed change of use.

20/00621/MAJ Pynes Farm, Ide - Conversion of four existing agricultural buildings to two dwellings, demolition of remaining barn buildings and replacement with eight dwellings including associated landscaping, parking and associated access works. Ide Parish Council supports this application.

**18/01024/MAJ Springwell Nursery Ide.** Erection of a new Garden Sales Area Building including Café and Restaurant, Storage Warehouse, New Public Car Park Area.

**Planning permissions granted for:**

**20/01094/HOU 13 The Hams, Ide.** 2 storey side extension with single storey rear extension with first floor balcony.

**20/01178/HOU Blacksmiths Cottage, 1 Fore Street, Ide** Single storey rear extension with skylight, refurbishment of existing rear kitchen extension including new doors and windows and re arrangement of existing PV panels on roof.

**Greater Exeter Strategic Plan.** The consultation exercise planned for September, which was to include a proposal for a large housing development in the south east corner of the parish along Markham Lane, has been put on hold because East Devon and Mid Devon DCs have withdrawn from the process. Teignbridge DC is assessing its options, pending further discussions and the Government's proposed planning law changes which are out for formal consultation.

**Ide Village,** the parish council's website, has been updated. Parish councillor Ben Ervine is the new website manager. The site has a fresh style, and should be easier to navigate. Find it as before at <http://idevillage.org.uk>

**Parish Councillor Vacancy.** There is one vacancy for a parish councillor - your opportunity to represent the local community and improve the quality of life in the village. It is an unpaid, elected, voluntary position. Parish and town councils form the neighbourhood tier of local authorities. You would be required to attend six bi-monthly meetings a year. Training will be provided. If you would like to be considered, please contact Mel Liversage or Nick Bradley by writing, phone or email.



The next meeting of Ide Parish Council and its Planning Committee is on Wednesday 18 November and will be conducted remotely, in public, using the Zoom conferencing platform. If you would like to speak at or follow either meeting on Zoom please contact us - see details below - for the meeting logon codes.

Ide Parish Council meetings: Andy Swain - [Andrew.Swain@teignbridge.gov.uk](mailto:Andrew.Swain@teignbridge.gov.uk) 0774 628 9121

Ide Parish Council Planning Committee meetings: Pete Bishop – [pete.ipc@gmail.com](mailto:pete.ipc@gmail.com) 0771 778 5760

Parish Council contact details:

**Clerk** – Mel Liversage 01392 259024 [ideparishclerk@gmail.com](mailto:ideparishclerk@gmail.com)

**Chair** – Nick Bradley 01392 420616 [ncabradley@gmail.com](mailto:ncabradley@gmail.com)

**Cemetery administrator:** Sarah Tiley 01392 217142 [saraht61@btinternet.com](mailto:saraht61@btinternet.com)



IDE MEMORIAL HALL

The Village Hall is now in use again, but everyone entering the hall needs to sanitise their hands in the porch. All organisations also need to keep a register of those attending any activity in order that people can be traced should, by chance, anyone be unwell shortly after being with others in the Hall. We are in the process of registering for a QR symbol which will be displayed in the Hall - connection with this with your smart phone will also assist with track and trace.

Social distancing needs to be maintained at all times and the fire exit can be used, if necessary, to exit the hall in order to avoid coming too close to people entering the hall.

If you would like to book the Hall please contact Carol Whitehart on 01392 213608. The cost is £8 per hour during the daytime and £10 per hour from 6pm.

B.Spivey

Writing can be a very enjoyable and satisfying activity. Maybe you really enjoyed writing when you were at school. Perhaps you could give it another go! This is a community magazine and could be greatly enlivened by your stories. Have you reacted strongly to something in the news?...write about it. Have you a lifelong passion for ...football, gardening, music, history, textile art, space exploration, tardigrades? ...write about it. We would love to hear from you.



### **October – O Food Miles – Oh Great Displays**

As we are now officially in Autumn our minds turn to more warming and filling foods as the ice cream freezer goes into hibernation until next Spring. Continuing the theme from last month's Ide Times article we continue to highlight the emphasis the shop has on local suppliers and local produce.

If you like a full English for breakfast, you can do it from the shop with sausages from Kenniford Farm at Clyst St Mary, locally produced bacon & black pudding from Isca Foods at Sowton, fried, poached or scrambled eggs from Black Dog Eggs near Crediton or Rushford Eggs at Chagford and grilled tomatoes and mushrooms from Dart Fresh Produce at Topsham.

If you are into a lighter breakfast, you could have toast made from Ryder's Bread at Kenn spread with Dunn's

Butter from Underdown Farm in West Devon and topped with jam from Little Bowhay at Shillingford Abbot or Mike Long's Honey from Longdown.

Or you might prefer the really healthy option of natural yoghurt from Sutton Lucy Dairy at Honiton topped with raspberries from Balls Farm at Ide or blueberries from Exmoor.

All options will be nicely complimented with tea or coffee from Mile's Tea at Porlock or apple juice from Little Bowhay at Shillingford Abbot.

Moving onto lunch, a jacket potato made with a potato from Dart Fresh Produce at Topsham that was grown in Kingsbridge topped with cheese from Isca Foods at Sowton, or a sandwich made with bread from Ryder's Bakery at Kenn with ham from Kenniford Farm at Cyst St Mary or cheese from Isca Foods at Sowton complemented with chutney from Little Bowhay at Shillingford Abbot with an apple from Peter Pattison's garden in Ide and a packet of Burt's Crisps from Roborough. With a refreshing Luscombe elderflower or lemonade drink from Buckfastleigh

A nice roast for tea, with chicken from Creedy Carver at Crediton or a pork joint from Kenniford Farm at Clyst St Mary or beef from Dartmoor, with roast potatoes from potatoes grown at Crediton with Savoy Cabbage grown in Newton Poppleford, broccoli from Newton Poppleford, swedes grown in Topsham or Crediton and stuffing from Redmoor Foods at Gunnislake. Rounded off with ice cream or sorbet from Langage Farm at Plymouth. Accompanied with a nice cider from Sandford Orchards at Crediton or an Exeter Brewery ale from Exeter.

And to round off the day at bedtime a hot chocolate from Miles Teas at Porlock.



**For a bit of fun – pick one of the meals listed and guess the amount of food miles covered for the whole meal and drop your answer with your name and address into the shop. The closest five guesses will win, appropriately as we are looking at food miles – a packet of wagon wheels.**

We are indebted to our wonderful volunteers who have kept the shop running through these ongoing challenging times. The shop is not all about serving and using the till – there are many other roles key to keeping the shop functioning. Janice is keen to recruit members to her cleaning team to keep the shop clean and hygienic– crucially important at this time.

We say a big thank you to Janice and of course Crispin who very often gets roped into help and Janice's other fantastic volunteers for the amazing job they do in keeping the shop so clean. They do so many tasks that go unnoticed but make a huge difference to the appearance and cleanliness of the shop – they are true local heroes and deserve to wear their pants outside of their trousers in true superhero style if they wanted to. We would be genuinely lost without them. They wave their feather dusters as powerfully the fairy godmother waves her wand to make good things happen.



It is good we have Ben as a volunteer on Friday mornings who can put his superb design skills to use arranging real life fruit and vegetables rather than dealing with all screen images. Ben is a real can-do volunteer who unpacks, checks, displays, date checks at the same time as serving and using the till – a real Friday morning star of the shop who is hair raisingly good fun to work with.

The new chiller with its posh lights in the door has been such an asset during the hot summer and means we can carry more fruit and vegetables and keep them in good condition for longer away from the heat of the shop.

We thank you for adhering to the rules when you come in the shop and wearing a face mask and sanitising your hands. We apologise when there are queues and you might have to wait a while – particularly for the post office which continues to be very busy as people still have to post so much with not being able to visit people as easily as they used to be able to. We highlight again that there are quieter periods during the day when you would have less of a wait. The nearer it is to 4.50pm when the post man collects the post the busier, we tend to be.

The lovely posters the children designed from the last competition will be on display soon but the printers will only handle certain things at the moment in certain ways due to the restrictions and want to charge £15 minimum charge for enlarging the pictures to A3 and so we are waiting until things settle a bit to get them enlarged. We enjoyed seeing the pictures and thank everyone for their hard work and they will be on display hopefully in the not too distant future.

Congratulations to Rosa who won the £5 spend raffle ticket draw and we hoped she enjoyed her hamper of local produce from the shop.

We have managed at long last to hold a socially distanced committee meeting in the village hall and sadly two members Carolyn Preece and Sue Cloke are not continuing and we say a big thank you to them for their help during the time they have been on the committee. We are glad that they will be still volunteering in the shop and Carolyn will be continuing to do the Bookers run alongside others which we are really grateful for, as it is a big commitment and a good few hours work to do it by the time you compile the list, go to Bookers and load and unload the car.

We are getting new lines and trying new products all the time in the shop, so do make sure you pop in regularly to see what is available and very soon we will be doing a feature on the history of the shop for those who are new to the village and do not know how the shop came into being and how the involvement of so many local people made it happen. Zetta King

\*\*\*\*\*



## KEEP IDE TIDY

Join us for a short and leisurely, socially-distanced stroll and litter pick around Ide and the locality on the second Sunday of the month, that will be 11 October 2020, meeting at 10am outside the Memorial Hall. Some litter pickers and Hi-Viz jackets will be provided but please bring your own if you have them, as well as gloves and some kind of bag (preferably not plastic but we know that's not always possible).

Cassa Tysoe <https://www.keepbritaintidy.org/home>





## **Ide Apple Day**

Thanks to funding from #CelebrateNationalLottery25 we are organising a number of activities in Ide this October to celebrate Apple Day. Apple Day is an annual celebration of traditional orchards and apples varieties that was launched by Common Ground on 21 October 1990. Most British apples ripen between August and November, so on Apple Day some apples will still be on the trees, whilst others have been harvested.

In Britain we grow some of the best apples in the world and over the years we have bred over 2,000 different varieties. Many of these are particular to a place e.g. Keswick Codin, Devonshire Quarrenden, and Yorkshire Greening. However, we are losing old orchards at an alarming rate. Until the 1950s orchards were widespread throughout the British Isles and almost every farm had its own orchard. But in the last 30 years we have lost two-thirds of our commercial orchards and Devon alone has lost 90% of all its orchards since 1965. Only 30-35% of the eating apples sold in the UK are grown here. By choosing local apples and locally produced apple juice we can help support orchards in the UK. The aim of Ide Apple Day is also to make use of some of apples that people have in their own gardens and to reduce food waste.

As part of the celebrations (COVID permitting) we will be organising some Apple Day activities in Ide Primary School on Wednesday 14 October. This will include juicing and story telling with Kevin from Organic Arts and apple themed printing activities with Double Elephant Print Workshop. If you have apples please leave a box out front before the Apple Day, so children can collect some for juicing in the school. We will also be trying to identify all the different apple varieties.

We were hoping to organise a communal meal at the village hall but unfortunately this is no longer possible due to COVID restrictions. So instead I am planning to create an Apple Day recipe booklet. We are also organising a scrumping project and have already started picking unwanted apples around the village and will be sending them to be juiced at Little Bowhay, hopefully including apples from Westown Farm. We will be asking for donations for the apple juice and the recipe booklet to help fund future Apple Day activities. We also hope to run a colouring competition in the shop and maybe even a treasure hunt?

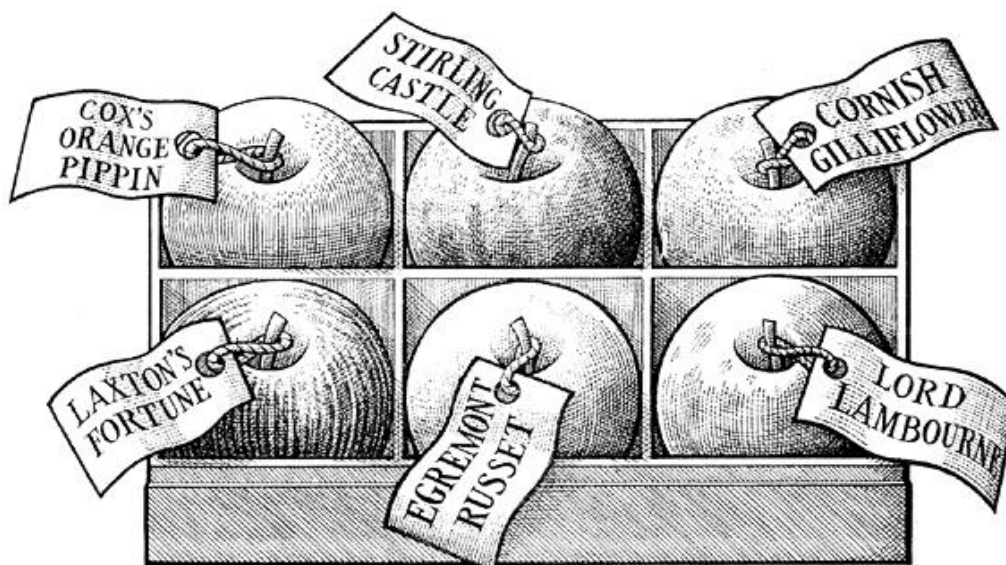


Ide was once surrounded by orchards and you can see some of the remaining trees when walking around, for example along the A30. An article from the Ide Times, printed in 1989, gives some of the history.

*"There was an orchard at the beginning of Old Ide Lane owned by Mr Frank Baker. In fact, one of the chalet-style houses which were built on the site of that orchard bears the name of 'Bakers Orchard'. Another orchard was opposite Pole House, and stretched as far as the river bank. At the end of The College and situated on each side of College Lane were two more orchards. A smaller one adjoined the Huntsman Inn grounds and there were two more at the rear of the 'Twisted Oak', or Bridge Inn as it was then known. At the top of the village there was an orchard on each side of the approach road to Ide railway station. The one on the left hand side reached back to Ide Hill and actually some of the trees of this particular orchard still remain. Further orchards were on the road to Westown, and also adjoining the Old Vicarage grounds, but little or no trace of these is visible now. It was a very colourful sight in May and June when all the blossom was out. Some of the varieties of the day were Orange Blenheims, Russetts, Qualanders, Tom Pots, King Alfreds, all names which are very rarely heard of in these days. Most of the apples went to Whiteways of Whimble for cider making. In the early days many truck loads used to go by rail from Ide station, but as motor transport and farm tractors and trailers took over from the horse and cart most farmers used to take their apples to Whimble using their own transport."*

An apple a day really does keep the doctor away, as there's growing scientific evidence about the health benefits of apples. It's been found that eating apples, as with other fruit and vegetables, reduces the risk of stroke, cancer, and Type 2 diabetes, due to the fibre and phytonutrients present in apples. Apples are great eaten just as they are as a dessert or snack, and can also be used in a huge range of sweet and savoury dishes. Apples are a great addition to vegetable soups, like carrot or parsnip. Apples are also delicious in salads, either grated or cut up in chunks. Apples, of course, make fantastic puddings, like apple crumble, pie, cake, or tarte tatin. You can use them on their own or combined with other fruits like blackberries, pears, rhubarb or quince.

If you would like to get involved in Apple Day in some way please send me an email [maresabossano@gmail.com](mailto:maresabossano@gmail.com)





There's a very good reason why 'reduce' and 'reuse' were chosen as the first words in the phrase above. Before we think about recycling anything, the very best thing that we can do for the environment is simply to use less resources in our daily life.

We live in a consumer driven society where we are continuously encouraged to think that the purpose of life is to Buy More Stuff. Yes, we have to buy some stuff, but there are many ways in which we can minimise the amount we buy and the resources we consume. The aim of this pamphlet is to provide information about the services, organisations and individuals that can help us reduce, reuse and recycle in our area.

Ide Climate & Environment Emergency Working Group



# REDUCE, RE-USE, RECYCLE in that order!

## REDUCE

In the UK one third of all food produced is thrown away and food waste is responsible for a staggering 8% of all global greenhouse gas emissions

### ➤ When you buy, think about.....

- **why** you're buying it - do you really need it?
- **what** you're buying - is there a more sustainable alternative?
- **where** you're buying it from - can you buy second hand, upcycled, or from a more local source?
- **Can you use your own bags or containers?**

Here are the places you can refill your own containers - food and other products e.g. washing up liquid

**Zero Exeter** 127 Fore Street, Exeter

<https://myzerolifestyle.co.uk/>

**Nourish** 67 Magdalen Road

[www.nourishzerowaste.com/](http://www.nourishzerowaste.com/)

**Real Food Store Exeter** 11-13 Paris Street, Exeter

[www.realfoodexeter.co.uk/](http://www.realfoodexeter.co.uk/)

**Healthfoods Unlimited** (non food only) 181 Cowick Street

[www.healthfoodsunlimited.co.uk/](http://www.healthfoodsunlimited.co.uk/)

**Seasons** (non food and spices) 8 Well Street, Exeter

[www.seasons-exeter.com/](http://www.seasons-exeter.com/)

**Mount Boon Milk Co., Longdown** 1 litre bottles can be bought and the refilled

- **Can you reduce your trips by buying in bulk?**

You could set up a buying group and order direct from **Essential** <https://www.essential-trading.co.uk/>

You can also buy cleaning products and shampoos in bulk online from **BioD** <https://biod.co.uk/> and

**Faith in Nature** <https://www.faithinnature.co.uk/>

- **When going for a takeaway** you could take your own cutlery and cups or find out if you can take your own containers.

### ➤ Think about ways of cutting down your use of resources such as water, electricity and other fuels . All of these are not only good for the environment but are usually good for your bank balance as well. For example the department of energy suggest that you can save 1% of your heating bill for every degree that you turn down your thermostat.

## RE-USE

The fashion industry produces 10% of all humanities carbon emissions, is the second largest consumer of the worlds water supply and pollutes the oceans with microplastics

|  |  |
|--|--|
| <b>Repair/maintenance</b>  | <p><b>Exeter Repair Café</b> – every third Saturday 10am-1pm at St Sidwells Community Centre, Sidwell Street, Exeter: small household items, (e.g. blenders, toys, heaters, fans ), laptops and electronic devices/IT issues, clothing items and accessories (e.g broken zips, hemlines) and larger electrical items such as TV's. Donation for service.</p> <p><b>Not operating again yet but you can email to check on the current situation.</b> E-mail <a href="mailto:exeterrepaircafe@gmail.com">exeterrepaircafe@gmail.com</a></p> <p><b>Men in Sheds</b> – will mend Garden &amp; DIY tools. 29 Paris Street, Exeter (Age UK) <a href="tel:07769591602">Shop telephone: 07769 591602</a> for details of opening times and drop-off arrangements.</p> <p><b>Ride On</b> - weekly workshop session where you can maintain your own bike with mechanics on hand to advise. 61 Haven Road, Exeter, EX2 8DP. E-mail: <a href="mailto:info@rideoncycling.org">info@rideoncycling.org</a></p> |
| <b>Donate to charity shop or social enterprise (where item sold at low cost/passed on to people on very low incomes)</b> | <p>If the item is in a good condition and someone else would be willing to pay for it – donate it to a charity. Those closer to Ide include:</p> <ul style="list-style-type: none"> <li>➤ various shops on Cowick Street, St Thomas</li> <li>➤ Reuse shop – at (Exeter Recycling and Refuse Centre ERRC), Exton Road, Marsh Barton (nothing electrical),</li> </ul>  |

|                               |   |
|-------------------------------|---|
|                               | <p>➤ the large <b>Hospice Care</b>, 2 Trusham Road, Marsh Barton.</p> <p>For more specific items:</p> <p><b>Bikes</b> – donate to <b>Ride On</b>, 61 Haven Road, Exeter, EX2 8DP</p> <p><b>Books</b> – <b>Book-Cycle</b>, West Street, Exeter website <a href="http://book-cycle.org">book-cycle.org</a> for details of opening</p> <p><b>Furniture/white goods/carpets</b> – <b>Turntable, the Warehouse, Swan Yard, Okehampton Street</b> contact via website <a href="http://www/turntable.org.uk">www/turntable.org.uk</a> or 01392 202032.</p> |
| <b>On-line swapping sites</b> | <p><b>Facebook sites:</b></p> <p>➤ <b>Exeter Journey to Zero Waste</b> – can post if have bulk/specific items to re-use</p> <p>➤ <b>Exeter Area Trading, Selling, Swapping and Free page Gum Tree</b></p>   |
| <b>Set-up your own swap</b>   | Clothes swap, plant swap, etc   |

## RECYCLE

Crisps, chocolate and cheese worst offenders for packaging recyclability according to latest Which? report

**ERRC, Exeter Recycling Centre**, Marsh Barton, Exeter

April – September: Monday - Friday 9-5, Saturday & Sunday 10-6

Oct-March: Monday - Friday 9-4:30, Saturday & Sunday 10-4:30

**TerraCycle** is an innovative recycling company that has become a global leader in recycling hard-to-recycle waste. Go to website to browse the drop-off locations for different items near you. Typically set up and managed by a single person or a small group of people (known as administrator(s) they do change quite often so checking regularly is advised.

| Item  | Where  | Other info   |
|---|--|--|
| Aerosols<br>Empty only                                | <b>ERRC (Exeter Recycling and Refuse Centre)</b> , Marsh Barton)<br>Sainsbury's Aliphington* | * Not currently in use but recycling in other supermarket car parks is available |
| Air freshener   | <b>Nourish</b> , 56 Fore Street, Topsham   |  |
| Baby food pouches                                     | Exeter Library <b>TerraCycle</b> collection  |  |
| Batteries   | Household collection Green Box<br><b>ERRC</b><br>Sainsbury's Aliphington*                    | Car batteries can be recycled at <b>ERRC</b><br>* Not currently in use           |
| Beauty products                                       | <b>Terracycle</b>  | <a href="http://www.terracycle.com">www.terracycle.com</a>                       |
| Beverage & drinks cartons                             | <b>ERRC</b>  |  |
| Bicycle inner tubes                                   | <b>Exeter Bike Workshop</b> 17 Market Place,   |  |
| Biscuit/bar wrappers<br>Bottle pumps/trigger          | <b>Terracycle</b>  | <a href="http://www.terracycle.com">www.terracycle.com</a>                       |
| Bottle tops (plastic)                                 | <b>Household collection Black Box</b>  |  |
| Bread bags  | 1 <sup>st</sup> Heavitree Rainbows c/o<br>amykellaway7@gmail.com                             | <b>Terracycle</b> collection   |
| Bubble wrap   | Recycled by Exeter but not Teignbridge   | Maybe contact Teignbridge?   |
| Cans  | <b>Household collection Black Box</b><br><b>ERRC</b>   |  |
| Candles   | <b>The Recycled Candle Company</b> , 16 Gandy Street, Exeter 01392 307020                    | Including tea lights in cases  |
| Card/cardboard  | <b>Household collection Green Box</b><br><b>ERRC</b>   |  |
| Carpet  | <b>ERRC</b>  |  |
| CD/DVD/videos and a wide range of large plastic items | <b>DCW Polymers</b> , EnvironHub, Marsh Barton, EX2 8NN                                      | Visit website for details<br><a href="http://dcw.co.uk">dcw.co.uk</a>            |
| Cereal boxes  | Ide Facebook collector – Andrea Elisabeth-Smith  | Recycles a range of packaging materials  |

|  |  |  |
|--|--|--|
| Computers  | <b>ERRC</b>  |  |
| Confectionary tubs                                     | Seasonal collection  | <a href="http://www.terracycle.com">www.terracycle.com</a>                           |
| Contact lenses   | <b>Boots</b> , High Street, Exeter   |  |
| Crisp packets  | <b>Real Food Store</b> , Queen Street, Exeter<br><b>Ellies Fund</b> – BTRS Charity Fund  | <a href="http://www.terracycle.com">www.terracycle.com</a>                           |
| Electrical items (big & small)                         | <b>ERRC</b>  |  |
| Foil and foil trays                                    | <b>Household collection Black Box</b>  |  |
| Duvets   | <b>Gabriel House</b> , Smythen Street, Exeter  | Can be dropped off any time  |
| Green waste  | Household green bin<br><b>ERRC</b>   | (opt-in chargeable service)  |
| Glass  | Household collection Black Box<br>Sainsbury's Alphington*<br><b>ERRC</b> (including window glass)<br><b>Spar</b> , Dunsford Hill | * Not currently in use   |
| Inhalers   | Participating pharmacies Complete the Cycle Scheme   |  |
| Laundry packaging                                      | <b>Nourish</b> , Topsham   |  |
| Light bulbs including fluorescent tubes                | <b>ERRC</b>  |  |
| LPG/gas bottles  | <b>ERRC</b>  |  |
| Make-up containers                                     | Broadclyst address   | <b>Terracycle</b>  |
| Metal  | <b>ERRC</b>  |  |
| Mobiles  | <b>Oxfam</b> , South Street, Exeter or via 'fonebank'  | <a href="http://www.fonebank.com/oxfam?Is=oxfam">www.fonebank.com/oxfam?Is=oxfam</a> |
| Oil (including cooking)                                | <b>ERRC</b>  |  |
| Paper  | <b>Household bluesack</b><br><b>ERRC</b>   |  |
| Paper coffee cups                                      | Sainsbury's Alphington*  | * Not currently in use   |
| Pens   | <b>Ellies Fund</b> – BTRS Charity Fund   | <a href="http://www.terracycle.com">www.terracycle.com</a>                           |
| Pet food pouches                                       | Recycling problems mean the terracycle service is not generally available  | Maybe switch to tinned or dry food   |
| Plant pots   | <b>ERRC</b>  |  |
| Plastic bags, cereal bags, freezer bags & plastic film | Sainsbury's Alphington*  | * Not currently in use   |
| Plastic bottles, yogurt pots                           | <b>Household collection Black Box</b><br><b>ERRC</b>   |  |
| Printer ink cartridges                                 | <b>ERRC</b>  |  |
| Shoes  | <b>ERRC</b> ,<br><b>West Exe Childrens Centre</b> (by entrance)  |  |
| Textile/clothing                                       | <b>Household collection</b> (separate bag)   | <b>Unavailable during lockdown</b>   |
| Tins   | <b>Household collection Black Box</b><br>Sainsbury's Alphington*<br><b>ERRC</b>  |  |
| Tools - garden   | Men in Sheds – Next to Exeter Bus Station  | Shop telephone: 07769 591602   |
| Toothbrushes   | <b>ERRC</b> – electrical   |  |
| Toothpaste tubes                                       | TerraCycles Oral Care Recycling Programme  | <a href="http://www.terracycle.com">www.terracycle.com</a>                           |
| White goods  | <b>ERRC</b>  |  |
| Wine corks   | By post to: <b>Recorked UK</b> , 11 Cornerhouse Lane, Widnes, WA8 9WD  |  |
| Wood   | <b>ERRC</b>  |  |
| Water filter cartridges                                | Sainsbury's Alphington *   |  |



## Jubilee Club

It is with pleasure we have made Enid Hoskin an honorary member of the club. Enid is no longer able to come to meetings and in gratitude for all the work she and John have done over the years this is a small way of saying thank you.

Looking back over the many photos, I am struck by the laughter and friendship experienced- how good it will be to be able to meet up again, but not just yet I fear. Meanwhile, take care and stay safe.

Jean Hoskin



## SAINT IDA'S CHURCH



### Services

|              |                         |        |                 |
|--------------|-------------------------|--------|-----------------|
| 4th October  | Trinity 17              | 9.30am | Holy Communion  |
| 11th October | <b>Harvest Festival</b> | 9.30am | Special Service |
| 18th October | Trinity 19              | 9.30am | Holy Communion  |
| 25th October |                         | 8am    | Holy Communion  |

When attending Services you will need to wear a face mask and to sanitise your hands when entering the Church.

Our Annual Parochial Church Meeting will be held on line, via Zoom, on Monday, 12th October, starting at 7pm.

The meeting ID is 852 0433 0139

Passcode: 306456

You need the above to log into the meeting. It is very much hoped that you will be able to join this meeting, when members of the Church Council and Church Wardens are normally elected, reports are received from the Church organisations and the Accounts are presented. This normally takes place in April but due to the virus it was postponed to October.

**Harvest Thanksgiving Service** - 11th October, 9.30am. This year our harvest gifts will need to be non-perishable goods, which can be left in the Church during the weekend of 10th/11th October. These gifts will be passed on to St Petrock's. We are pleased that members of the Congregational Church are able to join us on this occasion, but regret that we are unable to offer anyone lunch after the Service. Let us hope we can do that next year!

**Summer Time ends weekend 24th/25th October** - so the 8am Service on Sunday morning will not seem quite so early.

It is still possible to join with Alphington for the 11am Service on Sundays via Zoom or the St Michael's Alphington Facebook page. There is also a Wednesday evening Service at 7pm and daily prayers at 9am again via Zoom. If you would like the ID and password so that you can join any of these, please contact Mike Partridge on [rev.mike.partridge@gmail.com](mailto:rev.mike.partridge@gmail.com) or ring him on 01392 491476.

**The Church is open for private prayer on Thursdays from 10am to 4pm.** Parts of the Church have been cordoned off but there are chairs at the front where people can sit for a time of prayer or reflection.

**Baptisms (Christenings), Weddings & Banns of Marriage** - If you wish to make any enquiries about these please email [weddings@alphingtonstmichaels.org](mailto:weddings@alphingtonstmichaels.org) for weddings and banns of marriage at Ide; and [christenings@alphingtonstmichaels.org](mailto:christenings@alphingtonstmichaels.org) for baptisms at Ide; or you can ring 01392 491476.



## Ide Congregational Church

Ide Congregational Church is now open again.  
Our Sunday service is at 11am each Sunday morning and lasts for 30 minutes.  
Social distancing is required by all attending, as is wearing a face mask and applying hand sanitizer on entry and exit.



A screen has been fitted at the front of the church and a deep clean of the building undertaken to make attending church as safe as possible.  
You will be required to give your name and contact details on entry to ensure we have a track and trace system in place should any problems arise.

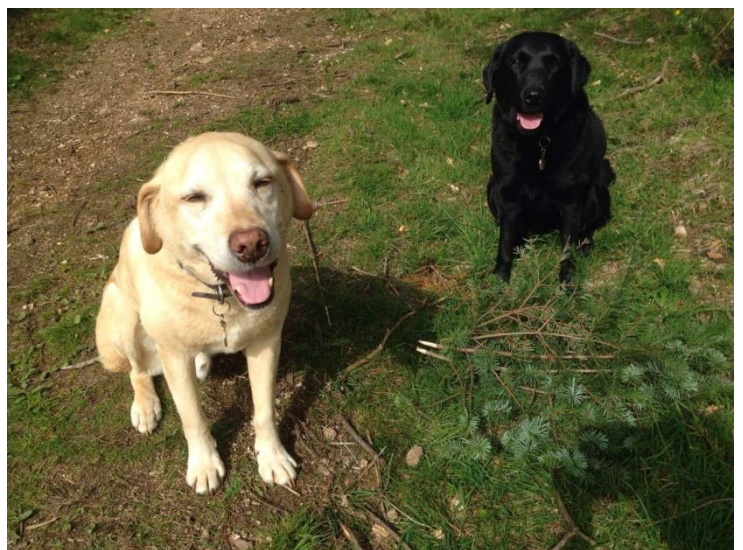
\*\*\*\*\*

## Helen's House and Hound Sitting

**Helen Haywood**

**07528959287**

[helenhaywood@outlook.com](mailto:helenhaywood@outlook.com)



Fully insured and CRB checked  
References can be provided



## One Century Ago

by David Garnsworthy

In Michaelmas Quarter of 1920 Randall and Winifred Garnsworthy arrived in Ide to take over the tenancy of Drakes Farm. This was divided in two with Randall's half of the land being across the college. This meant the cows, pigs and horses had to go along the brook. It was funny at feeding time to see the sows running across to the farm to feed their little ones.

They soon became involved in Village life. Randall on the Parish Council and Church Council where he became a sidesman. He also joined the British Legion and played football for the Ide Village team in the East Devon League where he received two medals when they won the league two years running.

Winifred joined the Church Mothers Union and the Womens Institute winning several prizes for her cooking. The milk from the cows was scalded to make cream which was sold in the village. People brought their glass dishes for the cream which they collected on Saturday morning.

Eggs were sold at the door so Winifred was kept busy. Chickens, ducks and geese were also reared and sold at Christmas together with two pigs.

They had two children, John born 1922 and David born 1926. When old enough they helped on the farm. It was lovely growing up with all those animals and across the road the brook with the minnows to be caught in a jam jar. Riding on the great big horses (17 +hands) was an experience to be remembered. Then the pony and trap for delivery of milk to houses in the village. The milk was dipped out of churns into people's jugs and money exchanged. Local children loved riding in the trap.

Sadly Randall died in 1932 from ulcers accrued in WW1. He was held in high esteem as the funeral suggests with a packed church. He was 35.

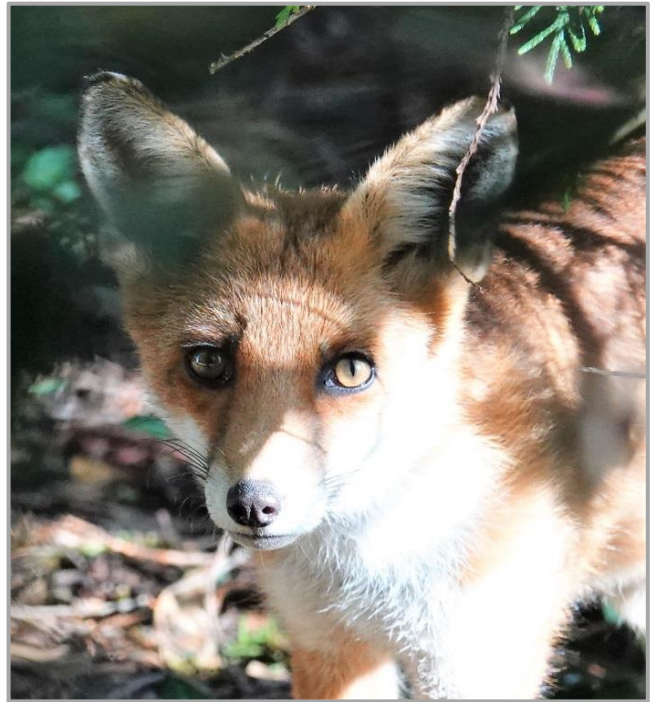
David followed in his footsteps serving the village and church which he loves.

I wrote and published a book entitled "The Village of Ide" and its organisations. I propose to do a re-run at £5 per copy as printing has gone up since 2016 when the first ones were sold.

Contact [garnsworthy@talktalk.net](mailto:garnsworthy@talktalk.net) if you would like a copy.



## WildIde



Thanks to Clare Wills for her superb photos of these beautiful animals.

**A thought:** we describe these animals as pests or vermin because they have an adverse effect on other species even though their adverse impact is a drop in the ocean compared with human impact.

**Since 1970, vertebrate populations – birds, mammals, amphibians and reptiles – have declined by 60%** (David Attenborough Extinction documentary) mostly down to human activities.



## CLIMATE and ENVIRONMENT EMERGENCY

### Help keep Ide beautiful

You may have seen South West Water in Ide on the morning of Tuesday 22 September and wondered what they were doing.

Wastewater operators Nick and Al responded very promptly to a suspected pollution incident at The College. The sewer that runs along Fore Street had become blocked and this caused an overflow into the stream. Nick and Al cleared the blockage and stopped the overflow within 10 minutes of being on site. They also used a CCTV camera to check the pipe, which showed that fat and other unflushable material had built up inside the sewer, causing the blockage.

We can all do our bit to keep Ide beautiful – and it's really easy. Only flush the 3Ps – pee, (toilet) paper and poo – down the loo and dispose of cooking oil, fat, grease and food waste in your food waste container and not down the sink.

**Becky Moran** Media and Campaigns Manager    South West Water

\*\*\*\*\*

**So, Ide has produced its very own fatberg.**



You will be relieved to hear that this photo is not our fatberg but the monster fatberg found in a sewer in London's Whitechapel. This gigantic mass of congealed fat, wet wipes, faeces, nappies, oil and condoms was 250-metres long and weighed 130 tonnes (longer than Tower Bridge and as heavy as eleven double decker buses)

Part of this fatberg achieved celebrity status when it was displayed in the Museum of London in 2019 where it started hatching flies

in the display case and growing mould (much to the disgusted delight of many visitors)

Fatbergs matter, the blockages they create can cause sewage to flow up into roads and waterways as well as homes and other buildings. They are also disgusting and difficult to remove because they harden to a rock like material. It took about 8 weeks to remove the 64 metre long fatberg in Sidmouth last year.

There are almost certainly other fatbergs building up under Ide! Time to think a bit harder about what we are putting down our sinks.

*Beware of wipes marked as flushable as they are likely to clog up the pipes somewhere. It is also a myth that running hot water and pouring washing-up liquid down the sink ahead of or after fats or oils will stop it clogging the pipes.*

*(Editor)*



## CLIMATE and ENVIRONMENT EMERGENCY

### Ide's place in Devon Wildland, by Kate Morley

The one thing the current situation has shown is that Humans are intrinsically part of Nature. With lockdowns earlier in the year more people were getting out in their local area and engaging with Nature on their doorsteps. People value nature that they can see in front of them, and what they see in front of them becomes familiar and in many cases treasured.

But what about the parts of Nature that have long gone and those which are under increasing pressures as Humans have learnt over many years to 'advance' by using new machinery and chemicals to shape their environment, much of Nature has drifted away and is now lost from our landscapes forever? Ide is not an island and how Nature can move through the parish is now more important than ever.

There is much good work going on in the the parish for nature. The collective work that many villagers are involved with at Pynes Community Orchard, Weir Meadow and the North Fields, Rewilding at the school, West Town Farm and plans to create a refuge for nature in the churchyard.

All of these projects are vital for creating havens for wildlife within the parish but each individual house owner and land owner must realise that what they do makes a difference and that they can really help Nature to thrive. An example of this was mentioned in Ide Times in the September issue, Hedgehogs have had a catastrophic decline in my lifetime with numbers plummeting and with predictions that they will be extinct by 2025. This calls for urgent action and I'm hoping that the people in Ide can make the parish a stronghold by reducing the use of chemicals and creating habitats in their gardens where a pile of sticks and leaves is seen as good habitat for Nature rather than a bit of a mess... but this is where we can all play our part in that we need to think about connectivity, and no I don't mean the excitement that super fast broadband is having along Ide High Street, I mean making sure animals such as Hedgehogs can move around the village. If every villager of Ide looked at their fences and made a hole that is a minimum of 13cm then that would really help them to find food sources and find a mate.

These small actions for Nature may seem inconsequential but if as a whole parish Ide has the will it can be part of something much bigger, which brings us to Devon Wildland. **Devon Wildland** is a vision to create a 'super connection for Nature' from Exeter to Fingle Woods in the Teign Valley; so now you see how important Ide is in the bigger picture. Longdown parish has recently started a Parish Nature Warden Scheme and it is hoped as we engage with other parishes that the good work that individuals are doing can be linked together and action on the ground can see real results to help Nature thrive.

So as well as taking action, if villagers of Ide would like to know more please get in touch at; [devonwildland@outlook.com](mailto:devonwildland@outlook.com) or find me at the Wild Ide Facebook page. I am not an ecologist, but I am rooted in this place and have a passion for the wonders of *our* Nature, in *our* backyard.

So as Dr Seuss said in the Lorax; "Unless someone like you cares a whole awful lot, nothing is going to get better. It's not."

## WEST TOWN FARM NEWS



Normally in October we would be preparing for our annual Apple and Pumpkin day. It does all *still* feel very strange. This year has felt like a parallel universe and a quick glance at our calendar just highlights events/occasions that have been cancelled. I hope this Autumn doesn't bring more rules and regulations, but it does seem to be heading in that direction.

The farm has been very quiet. It's just myself and Andy keeping things ticking over. He's keeping an eye on the animals while I run the Shepherds hut, meat sales and office side of things.

Some good news is our educational visits are starting up. It will be so good to hear kids on the farm again. It has felt such a shame not being able to share the land over the last few months.

We have our TB testing this month. Every animal needs to be checked and it takes place over the course of two days. Keep your fingers crossed for us!

Our pumpkin patch will be opened up and ready for visitors later this month 29th-31st Oct. We'll have a cafe running alongside the pumpkin picking. For both you would need to book a time slot. Head over to our website for more information.

Across the farm we set aside 5 acres specifically to grow wild bird seed, as biodiversity and a healthy wildlife population is incredibly important to us. We got to see the pay-off when Andy spotted a spectacular flock of over 100 goldfinches in Wilderness, he tried to take a photo but it didn't really do it justice.

We had a great write up in The Guardian the other day, we are glad Elizabeth-Jane Burnett seems to appreciate the magic of west town farm, and I do as much as we do.

We have lots of squash and pumpkins in the shop this month. Come get yours.

Grace Barrington- Events and Meat Sales  
West Town Farm, Ide, Exeter, EX2 9TG  
T: (01392) 811257 |  
[www.westtownfarm.co.uk](http://www.westtownfarm.co.uk)

\*\*\*\*\*

Printed by Philip Tucker parishmagazineprinting.co.uk

**AERIAL SERVICES  
(Mike Cummings)**

Your local aerial contractors  
On call 7 days a week  
Free estimates.  
Tel: 01392 279513  
Mob: 07836 641635

**TEAM REMOVALS & STORAGE**

01392 811 877  
[www.teamremovals.com](http://www.teamremovals.com)

Over 20 years experience in:  
Local – National and European Moves



Special rates for:  
Senior Citizens,  
Disabled,  
Armed Forces,  
Public Employees, and  
Midweek Removals

Professional, friendly  
uniformed staff  
No obligation quotations  
Competitive prices  
Part & full loads  
Part & full packing service

Long and short term container storage



01392 272779

[info@thehuntsmaninn.com](mailto:info@thehuntsmaninn.com)

**PLUMBING & HEATING**

GAS, OIL, LPG & SOLAR  
INSTALLATIONS,  
OIL TANK REPLACEMENT  
BOILER SERVICING & REPAIRS  
COMPLETE HEATING  
SYSTEMS  
BATHROOMS AND ALL GENERAL  
PLUMBING

COMPETITIVE  
PERSONAL SERVICE  
CALL

**CLIMATE SOLUTIONS**

Longdown 01392 811420

**BEST WESTERN LORD HALDON COUNTRY HOTEL**

Dunchideock - Nr Exeter, Devon, EX6 7YF  
Parties of all sizes welcome  
Ideal venue for Weddings, Anniversary Parties & special occasions  
Courtyard Restaurant  
British Cuisine Evening on the second Thursday of each month.  
Tel: 01392 832483.  
[enquiries@lordhaldonhotel.co.uk](mailto:enquiries@lordhaldonhotel.co.uk)

**MM** TYRES & BATTERIES  
UNIT 3, HENNOCK ROAD  
MARSH BARTON EXETER  
24 HOUR BREAKDOWN SERVICE  
Tel: Exeter 217322 (Day)  
M.W.Hunt M.D.Wells

[hatsahead.com](http://hatsahead.com)



07855833345

[hatsahead@outlook.com](mailto:hatsahead@outlook.com)

**KIWI** Painting & Decorating  
Fencing  
Gardening &  
Goundworks



**Maintenance**



Call Rick:  
07837 220637  
01392 258452  
[warwick.farrar@yahoo.com](mailto:warwick.farrar@yahoo.com)

Local and Reliable

**CARPETS SUPPLIED DIRECT  
CARPET FITTING SERVICE**

Tony Pym  
6 Beverley Close, Woodwater Lane, Exeter  
Tel. 01392 251243  
Mobile: 07802 151163



## HOME ELECTRICAL SERVICES

We are only up the road and here for all of your electrical needs. For quality, reliable and friendly service call Jamie Gardner for a free quote.

**NICEIC approved**  
**01392 952952**  
**homeexeter.co.uk**



**Milly & Peter welcome you to The Twisted Oak  
Pool . Darts . Big Screen TV . In & Outdoor play areas  
Great menu . Sunday Carvery . Private functions  
Ample seating inside & out  
Open from 10am 7 days a week**

**WHAT'S 4T? LTD**

## *Fine* MEMORIALS *Your independent local Mason*

11 HEAVITREE ROAD,  
EXETER, DEVON,  
EX1 2LD

TEL: 01392 250084



FOR A  
FREE BROCHURE  
CALL  
**0800 146887**

SHOWROOMS ALSO AT:  
TIVERTON • MINEHEAD • BARNSTAPLE • BRIDGWATER

**WWW.FINEMEMORIALS.CO.UK**

## NEIL SQUIRES - Roofing Contractor

Slating, tiling and leadwork specialist. Fascias, guttering, Cladding, shingles. 30 years experience.

If you want a professional, reliable and friendly local Tradesman, please give me a ring on:

**07779 249203 or 01392 811137**

Email **neilsquires70@sky.com**



**01392 811933**

## LEROY FUNERALS

...PUT YOUR TRUST IN US

**HEAD OFFICE**  
10 Alphington Road  
Exeter, EX2 8HH  
**01392 255535**

**EXETER OFFICE**  
298 Topsham Road  
Exeter, EX2 6HG  
**01392 211211**

**CREDITON OFFICE**  
94/95 High Street  
Crediton, EX17 3LB  
**01363 772326**

**leroyfunerals.co.uk**



We are an independent, caring, family run practice, providing 24-hour emergency service. Surgeries available 7 days a week.



Four branches across the City of Exeter  
Heavitree **01392 250066**  
Alphington **01392 493999**  
St Thomas **01392 250000**  
Whipton **01392 465553**  
**www.cityvets.co.uk**