

Ide Times



The census
is here
Sunday **21 March**

By taking part, you will help inform decisions about the things that matter to you and your community. If you need help to fill in your census form, we've got it covered. Visit www.census.gov.uk to find out more.

it's about us
census 2021

 Office for
National Statistics

CGPTASWA

MARCH 2021

D P Jones
Plumbing and Heating

- Bathroom Design and Installation (including building works, electrics ceramic tiling and underfloor heating)
- Boiler replacement and system upgrades
- Full Gas Central Heating Installation
- Boiler Repairs, Maintenance & Servicing
- Kitchen Installations
- Landlord Gas Certificates
- Free Estimates

Exeter 01392 468660 Mobile 07866 385816
dpjonesplumbing@gmail.com
www.dp-jones.co.uk

TOM JANSONU
PAINTING and DECORATING

- Interior and exterior work
- Cabinet painting specialist
- 15 years experience in Exeter and the Teign Valley
- Tidy and reliable

Please contact for an estimate .
Tel: 01392 811956 / 07919676002 .
Email: tomas.bob@icloud.com .

THE IRONING LADY

For all your domestic ironing needs - situated in Ide

Contact: Sharon Fleming
07588004615
sc.fleming@hotmail.co.uk



“ Selling and Letting property in Exeter and surrounding villages with integrity and enthusiasm for over **20 years.** ”

Call
01392 204 800
for a free sales
or rental valuation

Buds

FOR ALL YOUR GARDENING NEEDS

Contact us on:
07776 135944
01392 920641
info@budsgardening.co.uk

Freshen up your home

Dry Carpet Cleaning
Upholstery Cleaning
Hard Floor Cleaning
Wooden Floor Cleaning
Ultra Guard Protection
Deep Clean / Sanitisation

01392 240 842 or visit zerodrytime.com



Exeter's Traditional Family Independent Funeral Directors For Over 100 Years
M. Sillifant & Sons

Martin Sillifant & Son
A phone call will obtain our personal attention

01392-272688



19-20 Holloway Street, St Leonard's,
Exeter. EX2 4JD
www.sillifantandsons.co.uk

HAIR BY SUZY

Ide Village Hairdresser
20 years' experience

Tel: 077538 99729
Or 01392 439105

BEST CHIMNEY CLEAN Ltd

Jonathan Miles,
(APICS & HETAS approved)
Quillets, Little John's Cross Hill,
Exeter. Devon, EX2 9PL
Exeter (01392) 254120
(24 hour answering service)
e: hello@bestchimneyclean.co.uk
www.bestchimneyclean.co.uk

March 2021

Thank goodness that after the interminable grey days, light and colour are coming back. Every walk through the garden reveals welcome signs of returning life. There are some useful tips on page 12 for gardeners who want to be more green than just having green fingers. Another two articles take us back to Ide in the 1890s and just after WW1. The newspaper article detailing (and I do mean detailing!) the fires that engulfed 4 cottages at the bottom end of Ide in 1892 contains many amusing anecdotes...I'm still not sure whether all the humour is intentional...see what you think!



Ann Boyce

Articles for the April issue of the Ide Times should be sent to Brenda by the 20th March please – brendaspivey123@btinternet.com

USEFUL NUMBERS

Community Policeman: 101

The Parish Church - Rev Mike Partridge 01392 491476 and leave a message or 07751 725306, or email: rev.mike.partridge@gmail.com

Congregational Church: Jackie Chadwick jacky.c@talktalk.net

M.P. Mel Stride: 02072 197037 melstride.mp@parliament.uk

Community Shop Opening Hours: (Tel. 410035)

Monday – Friday 8am – 12 noon and 3pm – 6.30pm

Saturdays 8am – 1pm

Sundays 9am - 12 noon

Post Office Opening Hours

Monday - Friday 9am - 11.45 am & 3pm -

5pm Saturdays 9am - 12 noon



IDE MEMORIAL HALL – unavailable during national lockdown

360 BUS TIMETABLE

Ide	7.51	10.01	12.39	14.34	
Exeter Bus Station	8.13	10.20	12.58	14.53	
Exeter Bus Station	8.35	11.15	13.15	16.15	17.55
Ide	8.53	11.33	13.28	16.33	18.13

The bus is still running but you must wear a mask and only a limited number of passengers can travel.

The Weir Meadow and Pynes Community Orchard Working Groups have continued to meet regularly on Zoom. Prospectuses for fundraising are almost complete. We will be ready to launch them once the three year Option Agreements are signed. We still hold our breath for that; but when it happens, they are likely to be signed at the same time. This will allow us to do the fundraising as a joint venture for both projects under one umbrella group. We can co-ordinate and select applications for donations and grants, and make best use of the talent and resources available in the village.

National Census in England and Wales, Sunday 21 March, 2021

Questionnaires for the 2021 National Census, conducted every ten years, will be available electronically for the first time. Completed forms are expected to be returned predominantly online. But it will be possible to send in a paper census form. The Government has produced a booklet, **Reaching Key Population Groups, A Community Handbook**. It is available at: -

<https://census.gov.uk/downloadable-resources/> and will be available in Ide Shop.

The Children's Play Area, by Ide Primary School, is still open under the current Covid-19 restrictions. There is hand sanitizer in a dispenser on the fence inside; and clear guidelines outside and inside the play area, and on Idevillage.org.uk. The main rule to remember is that the numbers in the Play Area are restricted to a **maximum of two family groups at a time**, with only one adult per family group.

Recent FAQs about Parish Councils.

Q. What's the difference between Ide Parish Council and St Ida's Parochial Church Council?

A. A parish council is a civil, statutory, administrative body, the most local tier of government in the UK. Town councils are also parish councils in law, just rather bigger.

A parochial church council (PCC) is the most local organisational tier of the Church of England. It runs the parish church.

Until the 1860s ecclesiastical parishes combined civil and church administration. A parish was a parish. The notion of a civil parish then developed, and was formalised in 1894 by the Parish Councils Act. This removed all non-ecclesiastical functions from church run parish councils and passed them to newly formed, locally elected, civil bodies called..... parish councils. The existing councils for the parish church became known as parochial church councils.

Q. Which planning decisions are made by Teignbridge District Council and which by Ide Parish Council?

A. All are made by the District Council. Parish councils hold no decision making powers in planning law. Whether it's Ide Parish Council's Planning Committee, or the full council, we can only comment on, support or object to planning applications. The final decision on granting planning permission, and imposing conditions, is the District's. Parish councils have to be formally consulted by their principal district council - Teignbridge DC in our case- on all planning applications. We log our comments on the Teignbridge planning website, in the same place as any member of the public.

Q. Are Handforth PC meetings typical of parish council meetings?

A. Who knows! But they are a bit different from Ide's. Make up your own mind by coming to one of ours as a resident or member of the public. Contact Mel Liversage or Nick Bradley (see below) to ask for Zoom joining details ahead of the meeting.

Planning Matters

NEW APPLICATIONS
21/00292 - Springwell View, Ide Village Road, Ide EX2 9FB Erection of a detached garage, retention of hardstanding and use of land as domestic curtilage
20/02132/ADV - Stevens Farm, Ide Village Road, Ide EX2 9FB Retention of 3 advertising signs
UPDATES ON CURRENT APPLICATIONS
21/00080/HOU - 65 High Street, Ide. Demolition and rebuilding of an outbuilding, reconstruction of a greenhouse and alterations to the front and rear fenestrations of the main house. Supported.
20/01674/HOU - 2 Fore Street, Ide. Single storey extension. Revised. Teignbridge enforcement informed that the bridge has now been erected, and that the height of the front wall/fence also exceeds the height advised. Teignbridge Planning have requested an application for the bridge, and fence & wall.
20/00621/MAJ - Pynes Farm, Ide. Conversion of four existing agricultural buildings to two dwellings, demolition of remaining barn buildings and replacement with eight dwellings including associated landscaping, parking and associated access works. IPC supported with qualifications. Awaiting decision.
20/00615/FUL - Land opposite Chillies, College Lane, Ide. Five dwellings with garages and creation of new access. IPC objected. Awaiting decision.
20/00623/FUL – Stevens Farm, Ide. Change of Use to Skip and Plant Park with associated hard standing. IPC objected. TDC enforcement informed of commercial activity on the site. Awaiting decision.
18/01024/MAJ - Springwell Nursery, Ide. Erection of a new Garden Sales Area Building including Café and Restaurant, Storage Warehouse, New Public Car Park Area. IPC objected. Awaiting decision. PB reported that a section 106 measure to upgrade the pavement along Ide Village Road to a cycle path, and drainage issues, are under negotiation. CIL will be payable on this development. To view planning applications, go to www.teignbridge.gov.uk/planning and search using the address or reference number.

The next meeting of Ide Parish Council, which is conducted in public, is on Wednesday 17 March 2021 at 7.30pm by Zoom.

CONTACT DETAILS

Clerk – Mel Liversage 01392 259024 ideparishclerk@gmail.com

Chair – Nick Bradley 01392 420616 ncabradley@gmail.com

Cemetery administrator: Sarah Tiley 01392 217142 saraht61@btinternet.com

The census is a unique survey that takes place every 10 years in **England and Wales.**

By taking part, you'll help inform decisions that shape your community.

census 2021



The census helps show what we need

The information you give in the census helps provide the best picture of the needs of everyone in England and Wales for the next 10 years and beyond. Organisations such as local authorities and charities use this picture to plan and fund the services we all need, including transport, education and healthcare. Without the census, it'd be much more difficult to do this.

You must complete the census by law

~~It is an offence to supply false information or to not complete the census, and you could be fined up to £1,000. Some questions are clearly labelled as voluntary. It is not an offence if you do not answer these.~~

Thank you

We need something to look forward to, something to cheer us up, be colourful and provide a few surprises. This is what we have in the Memorial rose garden by the churchyard gates. Roses alone are beautiful but now I see that a small flower border has been set around them. Altogether the garden will be most attractive.

It is good to see how the bushes are so well cared for, and I would like to thank the gardeners personally. Never mind, let's hope that this article will be read by them. So thank you all who have gardened for us. It is greatly appreciated and will be more so when all is in bloom.

Sylvia Moore





Well, as we complete nearly a year of COVID-19 living and rules, regulations, face mask wearing and sanitizing, we notice how life has changed in the shop. Before it used to be a hub of people chatting and catching up on local gossip and happenings and who had seen who or not seen someone else, children and their friends coming in to work out who was having what sweets to get best value and share around. The main topic of conversation used to be the weather – now it is have you had your jab yet?

Now the volunteers have to 'police' people coming in and out of the shop and almost act as marshals. We do extend a very heart felt and genuine and very appreciative thank you to all the volunteers who have carried on putting themselves on the front line to keep the shop open. We are delighted that we have kept the shop open as normal and not had to close at all due to lack of manpower etc. It is challenging at times and hard when there is a queue forming to keep to the rules and allow one person in and one person out – but we have a duty to protect people and are doing our best to keep everyone safe.

We recently had an inspection by Teignbridge District Council on our Covid Procedures and we are delighted to say we passed – which is a testament to what everyone is doing to keep the shop safe. Thank you very much for your patience and understanding if you have had to wait a while to come into the shop – we again appreciate your help on this and for doing your bit to keep everyone safe.

Few people would have envisaged when they signed up to do their two hour shifts to help their local shop, they would have needed to end up having to do so much extra with all the spraying and polite reminders to people to sanitise, put on their face masks, and keep their distance and wait for someone else to finish. Years ago, we would have had masses of people in the shop at once and people happily chatting whilst someone else was being served and volunteers stacking the shelves and date checking as well but now as you have to leave room between people this just cannot happen but hopefully in the not-too-distant future we can go back to that. We also appreciate people working in the cold in the shop as it has been very, very cold lately and we need to keep the door open to keep the air moving due to the virus. It was only a rumour that the shop would be issuing shop long johns to the volunteers if the cold snap continued.

We would like to acknowledge what a great job David Williams does with the rota – it can be a challenge at the best of times and lately it has been even more so – but he has filled the slots every week.

A special thank you also to the Super Sunday Crew of Karen & Clive, Lin & Dave who selfishly give up their Sunday morning and the lie in most other people are enjoying to open the shop and ensure the Sunday papers and breakfast essentials are ready for you when you need them. They also do a lot behind the scenes whilst they're there in the way of cleaning and sorting out which goes mostly unnoticed but we are very grateful to them for. They really are our Sunday Stars.

We also thank Alison Ames who has taken on the task of keeping the forecourt clean and weed free which we appreciate her giving up her time to do. The shop really would not function without all the varied volunteers doing their bit in so many different and varied areas – a lot behind the scenes who you never get to see but who all contribute to the seamless running and superb functioning of the shop.

Thank you also to all the volunteers who have stepped in to cover shifts or do extra shifts to fill gaps. If you have not considered helping in the shop before and would like to know more about the various and varied volunteering roles there are please do speak to us on a no obligation basis.

Fruit and Vegetables sales have been very strong again during lockdown and the good local produce we stock helps keep local growers and farmers going – which again is another

important part of what we are as a local shop supporting local producers and growers etc. Just a reminder we can order most fresh produce lines in from our suppliers on a daily basis so if you need anything that you cannot see on the shelf let us know and we can normally get it for opening time the next morning and we are pleased to offer this as a service as again – it is your local shop, and we want to provide what local people need. We got asked to stock small cans of baked beans as the large tins were too much for some people and so now, we stock the small tins alongside the large tins. We have also started stocking Oreo Biscuits and Nesquik Milkshake Mix after being asked to.

Wine and cake sales have also been very strong in lockdown as people have to drink at home and treat themselves to lift their spirits as they cannot see family and friends or do normal things.

You will have noticed that we have started stocking **Sutton Lucy Dairy Milk** in the shop. Rebecca & Nicola Bartlett farm the family farm in Honiton and when Ashclyst and other local dairies ceased operating they decided to set up and fill the hole in the market, which they have done wonderfully. Not only is it great to be able to support a local family farm that produces great dairy products but they do not wrap their cartons of milk in plastic and so we have eliminated a major source of plastic for the shop which is a huge bonus.



Their small fruit yogurts really are worth trying – so full of flavour and much more natural than so many other artificially tasting ones.

The rise in postal rates has not dissuaded people from sending cards and letters to loved ones and friends to lift people's spirits and do something nice in these horrible times and we have been constantly very, very busy in the PO due to this and it is heartwarming to see all the

homemade cakes, biscuits, little presents and so much else being sent at this time – by people to show loved ones and friends they are thought of and it is nice to be part of that process.

We have broken records here for the amount of post bags we are sending out some nights – the postmen have had some interesting things to say when they see the sheer volume of bags, they have to collect some nights – good job they are all such lovely guys, and we have a good rapport with them.



Zetta King

Jubilee Club

Looking back, I see I was writing the February article for the Ide Times on a wet and windy day, and guess what, more of the same today! However with positive thinking the days getting longer it is time to be planting seeds, I have some seed potatoes chitting and lettuce seeds peeping through the compost. On that happy note we WILL all be meeting up some time hopefully before not too long.

I came across this newspaper cutting from March 1892 in a scrapbook of my grandmother's. Just thought it may cause some interest and amusement to Ide folk.

Meanwhile take care and keep smiling looking forward to seeing you all Jean Hoskin

I just loved this article, the style is priceless and there are some wonderfully funny bits - eg the policeman who rescued a lady's dinner from the oven of her burning house before it overcooked! I realized that there was too much of the original to include in a readable form so I have cut it down a bit and typed out some of the bits that were more difficult to read.

Editor

FIRE AT IDE.
THIS DAY.
FOUR COTTAGES DESTROYED.
A CHIMNEY SWEEP'S CHIMNEY
ON FIRE.
SAVING THE CAT AND THE DINNER.
AN UNSUCCESSFUL COW CHASE.
About noon to-day a fire, resulting in the total destruction of four cottages, occurred at Ide, but was fortunately unattended with any loss of, or even danger to, human life. It appears that shortly after mid-day flames were seen to burst from the roof of one of the cottages just above the Huntsman Inn, and occupied by Mr. Bright, a chimney sweep. An alarm was given, and several men in the employ of Mr. Perkins, wheelwright, at once commenced, with buckets of water, to endeavour to put out the flames. After a short time other men came upon the scene, and all worked most assiduously. Mr. Bickford, of the Bampfylde Mews, Exeter, who was passing at the time, rode into the city, and gave the alarm to the St. Thomas Fire Brigade, who, after telephoning to Superintendent Pett, of the Exeter Brigade, at once proceeded to the spot, arriving about half an hour after the call, and did valuable service before the arrival of the Exeter men.

Mr Pett, on receiving the message from St Thomas did not at once order out the engine as he did not, in the first place think the conflagration was serious enough. He, however, proceeded with a few of his men in a cab, but subsequently sent back for the engine and remainder of his brigade who leaving the station in New North Road at about twenty minutes to two o'clock, reached the scene in from ten to twelve minutes, and at once set to work. The fire however, rapidly spread to three adjoining cottages, two of which were occupied by Mr Stone (a stonemason), Mrs Spencer (a widow), the other being without a tenant.

Numbers of willing hands were ready to pump the two engines and a plentiful supply of water was forthcoming from the Fordlands stream. One gentleman on hearing of the fire had at once gone and pulled up the hatches of the stream thus turning the water from Pynes and Whiddon into the stream.

Within about an hour and a half the fire was well under control and the firemen were able to commence clearing away the thatch and throwing out the roof beams. The roads presented a scene of indescribable disorders. Beds, palliases, chairs tables and various household articles were strewn about in the greatest confusion. In all four cottages were completely gutted. Nearly all the household property was saved

Considerable amusement was caused by a black cat being lowered by a life-line from the roof of Bright's house. The members of the St. Thomas Police Force, with the Ide constable, considerably assisted the fire brigades by keeping the people at a distance, and P.C. Holloway, who was among the first on the scene, fetched Mrs. Bright's dinner from the oven, where it was in imminent danger of becoming over-cooked. Valuable assistance was rendered by Mr. William Fawden, Mr. Kerslake and several men in the employ of Mr. Perkins and Mr. Bradden. Mr. T. E. Richards, farmer, who resides opposite, was the first on the spot, and broke open the side door, thus getting to the rear of the premises. This gentleman also lent a number of rakes, &c., which proved very useful in tearing out the thatch, &c. The property is owned by Mrs. Milford, of St. Thomas, and the damage is estimated at from £280 to £300. The fire is supposed to have originated in the chimney of Mr. Bright's house. A quantity of salt is said to have been found in the grate of this house, and the chimney was noticed to have caught before the flames burst through the roof. It is supposed that there must have been some hole or other defect in the chimney. The engines on the spot were the St. Thomas and the Exeter No. 4, and Messrs. Ross and Pidsley, who own the Huntsman Inn, adjoining the burnt cottages, gave orders that the men assisting in pumping should be provided with beer free. The occupier of the inn is Mr. William Baker. During the progress of the fire a number of cows which were being driven along the road became frightened, and bolted up the mill stream. One of the men standing by mounted a horse and started in pursuit with the object of turning the animals back. He, however, was worsted in the encounter, as the cows overturned him into the stream. After a time the animals were induced to return to the road. When our representative left the scene at 8 30 the ruins were giving off clouds of smoke, and neither brigade had left the scene. The hoses were at that time being turned on to the smouldering heaps of thatch with a view to preventing the conflagration from again breaking out, as if this was to happen the adjoining properties, which are all thatched, would be in imminent danger. We have been unable to ascertain whether the household goods are insured. The houses are insured in the Sun Office.

Ide Congregational Church

Ide Congregational Church continues to be open for worship unless the rules change.

Our Sunday service is at 11am each Sunday morning and lasts for 30 minutes. Social distancing is required by all attending, as is wearing a face mask and applying hand sanitizer on entry and exit.



A screen has been fitted at the front of the church and a deep clean of the building undertaken to make attending church as safe as possible.

You will be required to give your name and contact details on entry to ensure we have a track and trace system in place should any problems arise.



We have now been unable to meet together for some months, but we have kept in touch, and often “wave” on Sundays at Zoom Church!

We haven't been able to raise as much money for MU charities as usual, but “Counting Our Blessings” over Christmas raised money towards “Away

from It All” holidays we provide for needy families. Hopefully this year they will be able to go ahead.

As soon as possible we will meet up, so keep in touch, and let me know how you are keeping. With my best wishes, Sue Campbell.

SAINT IDA'S CHURCH



Services

It is hoped that before too long we will be able to have Services in Church on a Sunday, meanwhile we are joining with Alphington Church and Shillingford Church on a Sunday morning for a Zoom Service at 11am. This Service is also available on Facebook (St Michael's Alphington Facebook page) and by YouTube. If you would like the Zoom ID and password, please contact the Revd Mike Partridge on rev.mike.partridge@gmail.com or ring him on 01392 491476.

The Church is open for private prayer on Thursdays and Sundays from 10am to 4pm.

Baptisms (Christenings), Weddings & Banns of Marriage – If you wish to make any enquiries about these please email weddings@alphingtonstmichaels.org for weddings and banns of marriage at Ide; and christenings@alphingtonstmichaels.org for baptisms at Ide, or you can ring 01392 491476.

Funeral –

The funeral of Pam Bedford of Exeter took place in Ide Church on Tuesday, 23rd February at 11am. Pam and her husband were regular attenders at Ide Church for a number of years and her husband is buried in Ide Cemetery. Our deepest sympathy go to her daughter, Suzie (who is a member of Ide's Mothers' Union) and the rest of the family.

Lent –

There is a Lent Course taking place on Wednesday evenings during Lent at 7.30pm via Zoom using the usual link (please arrive 15 minutes early). There is also one on Tuesday afternoons starting at 2pm, again via Zoom with the usual link.

Mothering Sunday is on the 14th March. It seems unlikely that we will be having a Service in church then but small bunches of flowers will be in the church porch and we hope you will come and help yourselves. In this period of lockdown mothers have played an even bigger part in homes, often helping with home schooling as well as everything else, including keeping everyone cheerful!

We hope that you are all keeping well and are enjoying seeing the signs of Spring in your gardens and the hedgerows.

Brenda Spivey

CLIMATE and ENVIRONMENT EMERGENCY

Ide in Bloom Update

Thanks to everyone who got in touch with me about Ide in Bloom - it looks like a "goer"!

I've got a kilo of wild flower seed I'll be sharing in a socially distanced way from our front porch! About 8g of seed covers about 2sq m so this should kick start summer colour.

It would be great to use some seed for our communal areas of the village. If you'd like to be part of the organising and take part please get in touch.

Further updates to follow!

Paula

paulabp@hotmail.co.uk

07970960789





Another stunning photo from Clare Wills of our smallest bird the Goldcrest.

Weighing only 5g (about the weight of a 5p coin) Goldcrests are almost entirely insectivorous and make the most of their light weight by foraging in places where larger birds can't go, like at the very end of small branches. Normally associated with coniferous woodland they are actually to be found in about 10 per cent of UK gardens all year round according to the BTO Garden BirdWatch survey.

However, as they generally

ignore our bird feeders, we rarely see them but during cold spells they need to keep their energy reserves up, so if you're lucky you might see one feeding on a fat ball.

Unfortunately, in very cold winters up to 80 per cent of goldcrests might die by the spring. Thankfully, occasional mild winters and the great effort the species puts into breeding gives the population an opportunity to recover. This diminutive bird can lay up to 12 eggs (the average is 6-8), which is equivalent to one and a half times the female's own body weight!

CLIMATE and ENVIRONMENT EMERGENCY

Gardening for Positive Wildlife and Climate Impact

With the growing season almost upon us, we wanted to highlight how we can all maximise the positive impact our gardening can have on wildlife and our climate. This applies whatever the size of your garden - by us all doing a little, we can change a lot.

Harness the natural - Slug pellets are an example of the negative impact gardening can have on our cherished wildlife - yes those pesky slugs will eat the pellets, but so too will our beloved hedgehogs, and sadly research has linked hedgehog deaths to toxicity from slug pellets. Artificial fertilisers, weed killers and pesticides have a high carbon footprint, as well as upsetting an otherwise self-regulating system which ensures no one pest dominates for long. For great-looking plants, we should instead concentrate on increasing soil health and, where needed, harness the power of natural pesticides and weed killers. Remember that birds are a gardener's friend, eating slugs, snails, and aphids.

- **Natural pesticides** - Use beer dregs in sunken old yogurt pots as slug traps - To treat mildew mix milk 50/50 with water as a spray on leaves - Many types of spray can be made up to treat blackfly, whitefly and aphids: try solutions of garlic, chilli, liquid-soap, or tomato leaves.
- **Natural weed killers** - On paving use boiling water to kill weeds - Avoid digging which brings annual weed seeds to the surface - Deeply (10-15cm) mulch beds to smother weeds and add nutrients.
- **Natural fertilizers** - Steep comfrey or nettle leaves in water for a super-rich feed, dilute the concentrate and hold your nose when it comes to the comfrey 'tea' - Steep a spadeful of compost (homemade preferably) in a hessian bag for 48hrs and use immediately - Feed your plants from household waste; use coffee grouts on blueberries & raspberries, wood ash on brassicas, eggshells on brassicas, apple & cherry trees, and banana skins in the base of planting holes. And for those daring gardeners, dilute your pee 1:20 with water to feed ornamentals and lawns.
- Mulch your soil rather than digging - this system mimics what naturally occurs every autumn when woodland leaves fall and feed the soil, and in turn the trees. The no-dig method ensures CO2 remains locked in soil.

Avoid peat and make your own compost - Peat bogs are home to rare plants and animals and in the UK we've lost 90% of our lowland bogs. Peat extraction itself releases vast amounts of carbon, and with 68% of our horticultural peat being imported, the overall carbon footprint is huge. Fortunately, there are now lots of alternatives, with many comparable in price to peat. Check out [gardenersworld.com](https://www.gardenersworld.com) for more information on peat alternatives. If you have space consider making your own compost - for a free guide email recycling@teignbridge.gov.uk

Plant pollinators - Our wild bees and other pollinators are in decline, and with a third of all our food 'beeing' bee-pollinated this matters to us as much as it does them. We can all do our bit by planting more 'simple' flowers (flat, open petals allowing easy access to the pollen/nectar), and species rich in pollen and nectar. For the most part, it's the sweet smell of flowers that draw in insects so the more of these in your garden the better. 'Bee' guided by the Royal Horticultural Society's (RHS) 'Plants for Pollinators' list for year-round flowering.

Choose permanent over temporary - The larger and longer-lived the plant, the more carbon it can absorb and store. If, this year, each of the 283 households in Ide planted one tree (even a small one in a pot), then by 2121 these will have absorbed 283 tonnes of carbon - equivalent to 140 years worth of diesel car travel for the average commuter. Avoid annual bedding plants which are largely grown in peat, in plastic pots, and cultivated in heated glasshouses. If you have space, consider planting a patch of native meadow - long grass is invaluable for many insects, and in turn birds and mammals.

Save water - As we all know from our water bills, our mains water is expensive (it also takes a lot of energy to produce) so it makes sense to reduce our use of it in the garden. Instead we can capture rain water by fitting water-butts to all downpipes, re-using washing-up water, and collecting rainwater in ponds. Remember that plants in pots require more watering so plant in the ground where you can. Ponds are vital for all wildlife in our gardens, and remember the more frogs your pond has, the more slugs and snails they'll eat!

Think about the 3 'R's in all aspects of your gardening -

Reduce - the amount of resources in all you do and where you can't re-use or recycle items then buy the best quality you can afford so the item lasts. Avoid plastic products when you can, and buy in bulk to avoid plastic packaging.

Re-use and recycle - wash old plastic pots and seed trays and re-use;

Reinvest - in second-hand gardening equipment such as those available from 'Men in Sheds' (search online via Age UK Exeter); they can also renovate your old tools.

Happy gardening

Alex Goodman ICCEWG

I have long suspected that grey squirrels get an unfairly bad press, perhaps because they are immigrants? This picture sent by a friend from a garden in Northern Ireland lends some support to this hypothesis!

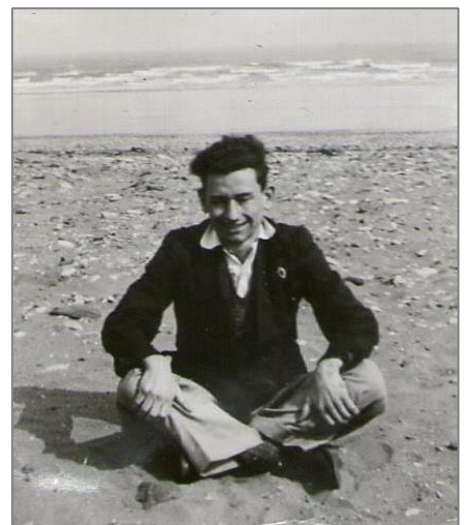


THE BOWDEN FAMILY IN IDE

I can trace my father's side of the family in Devon back over 200 years but my short story here starts in 1901 when Charles Kemp (age 30) and his wife Alice (age 23) are living at 4 Park View, Silverton and from the 1901 census have 2 small children Gwendoline and William. Charles is employed as a signalman at Silverton station. It must have been shortly thereafter that he accepted promotion and moved to Ide as stationmaster and lived at ' Springside ' High Street, Ide. This cottage still stands today, as you walk past the Congregational Church and up the High Street, immediately past the Church on the left there are 2 semi - detached cottages just set back from the road, and the second one I am quite certain was known as ' Springside '

All must have been well for a few years for Charles and Alice but tragedy strikes, Charles catches T.B and dies suddenly aged 37. Alice has 2 children and her employment is recorded as a seamstress on probably a low and unreliable income so the future must have been daunting to say the least, The 1911 census shows her living at ' Springside ' now aged 30 and her daughter Gwendoline 12 years old and William 7. After a short while however she meets Fred Bowden, he is a Greengrocer in Exeter and after a short romance they marry in 1912 at Buller Hall Registry Office in Cowick Street. On the 16/2/1913 Alice gives birth to Leslie Albert Wallace Bowden (my dad) As far as I am aware all my father's childhood and adult life until he married in his mid twenties were spent at ' Springside ' although there were short stays at ' Magnolia Cottage ' and the ' Poplars ' but I don't know why.

Fred Bowden was called up for the army in 1915 and spent the next 2 and a half years fighting in France at the Battle of The Somme, with the Durham Light Infantry. When he returned home to Ide he walked up the village, still in full army uniform, and went straight to the school, burst into the classroom, and lifted my dad high above his head, with outstretched arms, shouting all his love and joy and then walked out of the classroom, with my dad in his arms. A very displeased teacher, I'm sure, was left speechless!



My dad, Leslie Albert Bowden
above and at Ide School, front
row. second left

So life at Springside' went on for many years to follow and I will end my story here. All three children went to Ide school and then went on to make very successful careers for themselves. Gwendoline married a professional photographer and the pair established a very successful photography business in Bournemouth, before retiring to 'Little Johns Cross Hill'. William went into banking and ended his career in London after a lifetime of service, and my dad after studying at Ide and then Hele's school (now St Peters) went into insurance, spending over 40 years with a large national insurance company who had an office in Northernhay Place, Exeter. When I walk around Ide today, I can still imagine my dad with his stepsister and stepbrother playing endlessly in the long summer holidays, in the meadows, streams and woods around the village. Probably plenty of mischief thrown in for good measure. Also very different from today, very few cars, no phones, no television and no internet ! Just innocent fun.

My dad met his future wife Doris in his mid twenties and they were married for over 40 years and had three sons, of which I am the youngest. My dad, Leslie Albert Bowden is buried in Ide churchyard, which was always his wish. Chris Bowden

A Point of View

What a shame that they may close Doctors Walk. This means that several businesses will continue to suffer both financially and as a consequence of the verbal abuse they have received from some members of the public when they are trying to access their place of work.

Also, by closing off 3 out of the 4 routes into the western side of the city a lot more traffic is funnelled along one road to a dangerous T junction and then up and over Pocombe Hill where you are adding to the dangers experienced by the pedestrians who dare to try and share this road, as there are no footpaths and the bends obscure visibility.

The footpath that takes you to Alphington (on the left after you have crossed the curly whirly bridge) has recently been upgraded along part of its length with tarmac scalplings to make it usable in all weathers. This improvement could perhaps be completed to provide a traffic free route from Ide into Exeter.

I just wish that all the people who live in Ide had been consulted before the concrete megablocks were installed. This feels like a situation where the wishes of a vocal minority were favoured over a more democratic process. Kevin Taborn

When this article was received, I realised that it reflects some of the views expressed to me by others in the village who similarly feel that they were not consulted about the closure of the road. Little John's cross was actually the main road into Ide from the city for countless centuries. Older villagers remember the pleasure of leaving the city behind and instantly being transported into the country as you turned the corner. Being unable to drive down Little Johns Cross to go to Ide felt to some like the final erasure of what remained of an important part of Ide's historical connection to the city after the bitterly opposed separation imposed by the construction of the A30. Had there been a wider and more open discussion of the issues, it might even have been possible to arrive at a more intelligent traffic management solution for Balls Farm road and more sensitive to Ide's history. Editor

WEST TOWN FARM NEWS



I don't know about anyone else, but my toes are freezing! As always, it's been a busy month on the farm, and the weather has been as challenging as always. The cows have been enjoying some time inside to keep out of the cold, and the sheep even joined them for a few days when it started to snow!



We started February off with a bang, marking the reopening of the farm trail with a successful takeaway BBQ. It was fantastic seeing so many of you come out to support us and walk the trail for your daily exercise. If you didn't get a chance to walk the trail last month, fear not, as the trail is always open! If you're not sure where you're going, maps can be found on the wall of the farm shop in the yard. We've also managed to squeeze in some hedge laying and tree planting this month, so a big thank you to our volunteers who came and helped us for the weekend.

Looking forward to March, there's lots to get excited about. Unfortunately, the snow has meant we've had to postpone our fresh meat by a week, so we'll now have fresh meat in the shop from Thursday 11th. In addition to our usual range of meat, we'll also be welcoming guest butcher Ray to the farm, who will be preparing a range of different beef cuts. If you have any special requests, please do pop me an email. All of Ray's fresh cuts will be available to purchase at the farm's first

'Plastic Free Farmers' Market', which will be held on **Saturday 13th March**. You can look forward to meat from ourselves, veg from Shillingford, and bread from the Boatyard Bakery, all available in plastic-free packaging.

Finally, on **March 3rd**, it's **World Wildlife Day**, and we'd love to encourage you to spend some time teaching yourself and the children in your life about what's going on in the world of wildlife. There are loads of great resources out there, and you can check out our social media for more on what we're doing to mark the day.

As ever, stay safe all and please do get in touch if there is anything that we can do for you.

Holly Jackson - Events and Meat Sales West Town Farm, Ide, Exeter, EX2 9TG
T: (01392) 811257 | E: hello@westtownfarm.co.uk | www.westtownfarm.co.uk

Printed by Philip Tucker parishmagazineprinting.co.uk

**AERIAL SERVICES
(Mike Cummings)**

Your local aerial contractors
On call 7 days a week
Free estimates.
Tel: 01392 279513
Mob: 07836 641635

TEAM REMOVALS & STORAGE

01392 811 877
www.teamremovals.com

Over 20 years experience in:
Local – National and European Moves



Special rates for:
Senior Citizens,
Disabled,
Armed Forces,
Public Employees, and
Midweek Removals

Professional, friendly
uniformed staff
No obligation quotations
Competitive prices
Part & full loads
Part & full packing service
Long and short term container storage



01392 272779

info@thehuntsmaninn.com

PLUMBING & HEATING

GAS, OIL, LPG & SOLAR
INSTALLATIONS,
OIL TANK REPLACEMENT
BOILER SERVICING & REPAIRS
COMPLETE HEATING
SYSTEMS
BATHROOMS AND ALL GENERAL
PLUMBING

COMPETITIVE
PERSONAL SERVICE
CALL

CLIMATE SOLUTIONS

Longdown 01392 811420

BEST WESTERN LORD HALDON COUNTRY HOTEL

Dunchideock - Nr Exeter, Devon, EX6 7YF
Parties of all sizes welcome
Ideal venue for Weddings, Anniversary Parties & special occasions
Courtyard Restaurant
British Cuisine Evening on the second Thursday of each month.
Tel: 01392 832483.
enquiries@lordhaldonhotel.co.uk



24 HOUR BREAKDOWN SERVICE

Tel: Exeter 217322 (Day)

M.W.Hunt

M.D.Wells

hatsahead.com



07855833345

hatsahead@outlook.com

KIWI Painting & Decorating
Fencing
Gardening &
Goundworks

Maintenance

Local and Reliable

Call Rick:
07837 220637
01392 258452
warwick.farrar@yahoo.com

**CARPETS SUPPLIED DIRECT
CARPET FITTING SERVICE**

Tony Pym
6 Beverley Close, Woodwater Lane, Exeter
Tel. 01392 251243
Mobile: 07802 151163

HOME ELECTRICAL SERVICES

We are only up the road and here for all of your electrical needs. For quality, reliable and friendly service call Jamie Gardner for a free quote.

NICEIC approved
01392 952952
homeexeter.co.uk



**Milly & Peter welcome you to The Twisted Oak
Pool . Darts . Big Screen TV . In & Outdoor play areas
Great menu . Sunday Carvery . Private functions
Ample seating inside & out
Open from 10am 7 days a week**

WHAT'S 4T? LTD

Fine MEMORIALS *Your independent local Mason*

11 HEAVITREE ROAD,
EXETER, DEVON,
EX1 2LD

TEL: 01392 250084



FOR A
FREE BROCHURE
CALL
0800 146887

SHOWROOMS ALSO AT:
TIVERTON • MINEHEAD • BARNSTAPLE • BRIDGWATER
WWW.FINEMEMORIALS.CO.UK

NEIL SQUIRES - Roofing Contractor

Slating, tiling and leadwork specialist. Fascias, guttering, Cladding, shingles. 30 years experience.

If you want a professional, reliable and friendly local Tradesman, please give me a ring on:

07779 249203 or 01392 811137

Email **neilsquires70@sky.com**



01392 811933

LEROY FUNERALS

...PUT YOUR TRUST IN US

HEAD OFFICE
10 Alphington Road
Exeter, EX2 8HH
01392 255535

EXETER OFFICE
298 Topsham Road
Exeter, EX2 6HG
01392 211211

CREDITON OFFICE
94/95 High Street
Credon, EX17 3LB
01363 772326

leroyfunerals.co.uk



We are an independent, caring, family run practice, providing 24-hour emergency service. Surgeries available 7 days a week.



Four branches across the City of Exeter
Heavitree **01392 250066**
Alphington **01392 493999**
St Thomas **01392 250000**
Whipton **01392 465553**
www.cityvets.co.uk