



Ide in Bloom 2021

A Portfolio of our Community Gardening Activities



JULY 2021
IDE GROWERS

Introduction

Ide is a small and friendly village on the SW outskirts of Exeter. We have a population of about 500 people and although we are close to the city, we have a strong village identity and an enviable sense of community.

We have a growing group of very keen amateur gardeners and environmentalists, and we are actively pursuing many projects associated with the natural environment.

We hope you enjoy visiting our village and our entry demonstrates our strong community spirit but also some of the great environmental and horticultural activities we are currently undertaking.

Our approach

Our village style and spirit are very informal. Our Ide in Bloom entry was submitted on the basis that we are keen for people to love their surroundings but not to feel pressured into putting together very formal perfect floral displays. We are a fledgling entry, there are weeds and there will be seasonal setbacks, but it's having a focus and getting people involved that matters.

What we hope to achieve

Whilst we know we won't achieve gold standard we did have goals in mind whilst making this entry:

- To generate interest and enthusiasm in gardening growing and our natural environment
- To enhance the village
- To bring the community together in a covid safe way with community gardening activities
- To promote legacy planting and better maintenance of communal areas
- To test ideas and identify areas that could be planted for the benefit of the environment, wildlife and the community in the future
- And most of all to have fun!

Our Village Trail

Our Village trail takes you through the heart of the village providing a glimpse and summarising what's going on!

Tour of Britain Trugs



These were purchased by Ide Parish Council to provide an entrance feature for the village during the cycle race tour of Britain, when the race entered our village from Ide Village Road. They have different aspects, one being very shady, the other enjoying full sunlight for most of the day. The trugs have been looked after by a few different people over the years. This year they have been planted with donations from our Community Shop and from Ide Growers, who have grown many of the contributions

from seed. There are a group of volunteers on a watering rota throughout the summer. We've battled cold weather and slug attack! We haven't got these perfectly symmetrical, but we have ensured we have retained bulbs for other seasons!

The Cherries and Cross View Terrace

Small but perfectly formed, we have a really great atmosphere in all the parts of our village!



Our gardens form an oasis for social activities. Cross view Terrace has a history of allotment gardens at the front of the properties. Every garden is different reflecting the interests of the owners



Fore Street



Mainly on-road properties make it difficult to have loads of flowers, and planters obstruct the pavement, so we have tried to encourage hanging baskets and window boxes.

Our Community Shop has been funded by the village and is run by volunteers. It has been massively supportive of Ide in Bloom. Not only have they provided us with space for our seed swap but they have also donated plants. They



are also running a flower colouring competition to help get children involved and raise awareness.



The College



The ford at the bottom of the village forms one of the key focal points of the lower part of the village.

The roses have been beautiful and always are. Residents sit at the front of their houses and enjoy village life as do many visitors. We have taken the opportunity to paint our benches which are now 21 years old!



The Huntsman



Due to COVID much emphasis has been put on outside space. Neighbours and friends have helped Colin the landlord to make the outside space as welcoming as possible, he has worked incredibly hard with grasses and bamboos to make a garden from part of his car park. Of note are his incredible hanging baskets! During lockdown we have also taken the opportunity to replace the existing

hedgerow with a mixed species native hedgerow. This year this has been supplemented with wildflower planting again to enhance the outside space to also to show visitors how attractive wildflower planting can be. We have been trying to encourage as many people as possible to grow wildflowers to help our pollinators, including a big seed give away in February just before our village plant and seed swap.



Lower High Street and Ide Congregational Chapel



Cottages maintain the traditional picket fence seen in old photographs of the village. The Congregational church garden is challenging due to lack of soil and the aspect of this garden and we cannot use weedkiller. The Remembrance garden has a number of memorials, and ashes are scattered in the garden. Planted throughout the

year, we decorate the garden with lights at Christmas, magnolia and bulbs come up in spring.



The Hams and The Green



The Hams wildflower planting: we wanted to rotavate the soil to establish beds along the grass verge. This wasn't possible, so we scarified the grass to expose as much of the soil as possible. Our experiential wildflower planting aimed to establish swathes of wildflowers along the top grass line joining up with the Green and the churchyard. The areas were planted by a group of volunteers from Ide Growers and supported by the residents.



Unfortunately, we haven't had much luck, the grass outcompeting the wildflower seeds. But we know that people have been growing the mix in their back gardens, some have even turned over parts of the vegetable gardens to accommodate a patch of wildflowers as shared this on our Facebook page.



Sowing the seed on the verge has been a great learning point and in sowing the same seed in various parts of the village we can demonstrate the different conditions and work out what is best. In addition, there may be some opportunity for autumn seeding or we may find seeds lie dormant and germinate next year.



The Green, during lock down, only the central area of the green was mown and you could see the beginnings of a meadow. We have since tried to establish some wildflowers around the northern edge of The Green with the thought that this would join up the areas to give a constant flow of flowers through the village.

St Ida's Church Yard



During the year we have changed the way in which the grass in St Ida's churchyard is managed. With the support of the Parish Council, Parochial Church Council and Teignbridge District Council a new grass cutting regime has been trialled with the aim of encouraging an increase in the abundance and diversity of wild flowers. The grass along the paths through the churchyard and around tended graves have continued to be cut on a regular basis. All other areas have been cut less frequently, with a main cut in late summer and



again before December, with the grass cuttings being removed from the site. This will let flowers set seed and reduce the build-up of grass mulch which increases soil fertility and prevents many wildflower species establishing. Some additional seeding with a wildflower seed mix may also be undertaken in the autumn, depending on what flowers turn up this summer. Progress with the trial will be provided in the Ide Times and in the Wild Ide Facebook Group. All being good, we will also be looking out for some willing volunteers to help rake and clear the cut grass later in the year! - Richard Cottle - Ide Climate and Environment Emergency Working Group.

Pynes Orchard Restoration



On a windy Sunday morning in the middle of January, 2019 Charles Staniland from Orchard Link led an apple tree pruning 'teach-in' in Pynes Orchard, as part of the restoration of the orchard.

This was the first community event we'd held and it was great fun, with lots of advice and tips – with the aim in this 1st year to thin out each tree by pruning out dead wood, reducing crowding and encouraging new growth.

Since that first event the working group has cleared, pruned and planted helping to restore the site. Its 3.87 acres of sloping field, facing north, overlook the village.

The Church Commissioners currently own Pynes Orchard and, stimulated by discussions about the Ide Neighbourhood Plan, they have agreed to sell it to the Parish Council for use as a community orchard. Originally part of Canns Farm, this orchard predates the Victorian era by several hundred years and could quite easily have been originally planted in medieval times. The fact that it still lies within its original boundaries adds to its historical importance.

With a number of rare old apple trees it is not an exaggeration to state that historically this is one of the most important orchard sites in the county, an outstanding piece of landscape heritage for the whole community of Ide to cherish and enjoy for many years to come.



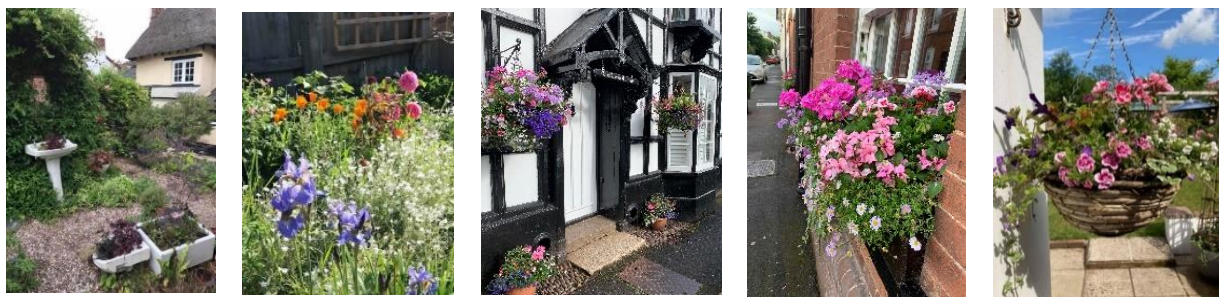
Upper High Street



Again, we have very few front gardens, but we have noticed a real increase this year in the number of residents who have put out hanging baskets and have been creative in their gardening! We love the



bathtub at the top of the High street and some of the planting behind some of the properties in the Upper High Street.



Ide School Wildlife and Sensory Project

Rewilding Ide School (grounds not children!)

Two years ago school asked for requests for help in clearing the school grounds. A group of volunteers (parents, neighbours and governors) responded and helped to clear areas of the school, changing large unused or potentially unsafe areas into places where the children can play or use safely. This has been invaluable over the past year, encouraging the children to be outside more.

There is now a large outdoor play area with music station and large planters for the children to grow plants or vegetables in alongside the pre-school building.

When clearing and tidying the overgrown hedges, we discovered that the school field fence had a few large holes in it and in places the weight of the trees and hedges had actually pulled it down. We talked to the neighbours about the need to replace the fence and how we could do this to enhance the environment and provide more habitats for wildlife. The fence was erected with hedgehog gaps. Native hedgerow shrubs and trees were planted on the school side of the new fence. We will be adding our numbers planted to the count in the Countryfile 'Plant a Tree' campaign. In the future we are planning to plant or sow more shrubs and wildflowers in these areas.

In addition, bird boxes have been cleaned out and repaired, hedgehog houses have been made by a child (& grandparent), more hedgehog gaps have been created and bulbs and shrubs have been planted in the outdoor learning areas and the front garden. The children helped to create a log pile, a bug hotel, a wildlife bath and bird feeders.



Our work last year was recognised by the Devon Wildlife Trust who awarded us a Wildlife Garden Award. The award certificate is displayed on the shed in the outdoor learning area.

The school is part of the RHS school gardening campaign. Hopefully, we will be able to plant the sunflower seed that were sent to the school just prior to lockdown 1.0. This year we have drawn up an Environment Enrichment Proposal planning out our strategy for improving the school site for children, staff, wildlife & climate (special thanks to Kate Morley, parent and Longdown Wildlife Warden (and Ide



Parent!) for her input). Covid curtailed some of our activities but Kate has continued creating a wonderful sensory garden to promote wellbeing and our wildflower areas and continues to manage these.

Providing bat boxes and slow worm habitats.

The mound at the top of the school field on to the playpark has been left to rewild. We are hoping to involve the children in growing & planting wildflower plugs within this area to help start it.



Wildflower seeds were planted last spring, a few did grow, which looked amazing unfortunately very few were in school to enjoy them!

The Woodland Trust has a scheme to apply for hedgerow saplings and trees. We applied for some hedgerow saplings which arrived in November and were planted in the front garden of school. These will provide privacy and should help to reduce pollution from the road.

We have applied for another allocation of saplings which arrived in March . We would have loved to invite the community to come and help to plant these but Covid restrictions didn't

The school has a green team of children who work with Mrs Brown to look at all areas of climate and environment change. We hope that in doing all these small things for and with the children in school they will engage and be inspired to take some of these ideas home to parents carers and grandparents, If this results in even just one change or action to help the environment or reduce our contribution to climate change, it will be something we can be proud of. We love the idea that the school is helping Ide to lead the way in fighting climate change.



Thank you so much to all the volunteers that have given time, skills and money to improve the school grounds for all. We are so massively grateful and proud of what has been achieved so far. Fingers crossed, soon we can continue with all our exciting plans. Covid has put a hold on the "Make a Difference" days that we hold on the first Sunday of the month , when allowed to meet again, we would love the community to come and help too, bring your skills, knowledge or just a hour to burn off the calories.

Jemma Webb (Lead Governors Premises & organiser of Make a Difference days
g.webb@ide.devon.sch.uk)

Ide Village Allotments



Small number of plots, watering and sandy soil is a huge challenge but there are several allotment holders who have enjoyed the space for many years as well as welcoming new holders. Many of the holders use the space to extend their own gardens. We grow everything from board beams to grapes!



Coronation Garden and Poplar Cottage



The Coronation Gardens are along the main High Street and are a very well used and well-liked amenity within the village, with many people walking in from Exeter and its surrounds. Our benches provide a lunch break spot for teachers and over the easing lockdown people have met up with friends for a socially distanced chat.



Ide Growers and other volunteers have cut back the vegetation, pruned, weeded and mulched the area. In particular, we have trimmed the box bush and tried to introduce seasonal colour. We have cut back the everlasting but invasive geraniums, discovering fruit bushes, rose and a small herb garden. The gardens have presented a number of challenges. Shrubs along the western boundary make the conditions very shady and plants are prone to slug attack. Soil on the eastern boundary is very sparse and children have made a not so secret short cut up through the flower bed!



The gardens were formerly the mill pond and the entrance has changed over the years to accommodate a greater seating area. We have planted blue lobelia down the centre section to symbolise the water. We have also introduced echiums and a small banana plant grown from seeds to signify climate change in contrast to the tradition fruit tree.



The Walk to West Town

In addition to all the gardens in the centre of the village we also enjoy a walk “around the world” – more to come on the visit!

Our Groups and Events

We have a number of active groups throughout our village.

IDE Growers

Ide Growers are a small number of enthusiastic gardeners who have been the main supporters of Ide in Bloom. They have helped to prune and tidy some of our central communal areas in particular the Tour of Britain trugs and the Coronation Gardens. Through the year the group puts on a number of events to benefit the whole community.

Plant and Seed swap

This took place in April, supported by our community shop. In previous years we have held this on one morning to help social distancing we were kindly provided shelving outside the shop for one week making it very much more relaxed allowing more people to take part.



Ide Village Show



This is always a good event on the village calendar where we share our gardening successes combined with baking and preserving skills. We have every category from three perfect pears to the largest vegetable. All great fun.



This year we are teaming up with the Parish Church, one of the first events we are considering post lockdown.



Ide Open Gardens

This is a biennial event highly pressured as gardens must look perfect for the event!!! During lockdown restrictions a brochure produced for 2020 – copy available on the day!

Ide Wildlife Wardens

As part of the Teignbridge Action on Climate (ACT) initiative a network of parish wildlife wardens is being set up. The aim of the wardens is to help support, protect and increase wildlife in Teignbridge

through working with parish communities.

Jenny Miles and Richard Cottle are starting off as Ide's two wardens and will over the next few months be putting forward a range of ideas and projects that people in the Parish can be involved with. Here are a few words by way of introduction from Jenny and Richard.

Jenny - I moved to Ide in September last year with my husband Dan and our toddler Reuben. I have always loved nature and understanding how different species live and co-exist, and my love of conservation grew from watching David Attenborough documentaries and studying Biology. I want to learn and share ways of supporting the wildlife around us to live happily - imagine an Ide without the owls hooting at night and without the homely sparrows chattering away in the hedgerows? I am looking forward to organising some group activities to benefit and increase Ide's biodiversity as soon as we can.



Richard - I moved to the village with my partner (Lorraine) and two boys in 2018. I am a palaeontologist by training but ended up working in nature conservation and as an environmental scientist for over 25 years. I have, since I can remember, always been interested in natural history, although moths and insects are really my 'thing'. I would love to get some Parish-wide survey and monitoring projects up and running to give us a better idea of the wildlife in the local area and what measures we can take to improve habitats.



Updates via the Wild Ide Facebook group

[Ide Climate Emergency Group](#)

Growing numbers of parish, town and county councils are declaring a Climate Emergency. Ide Parish Council (PC) declared a climate emergency on 20th March 2019. This is a genuine commitment to work towards a specific measurable target. It might seem that a Parish Council can't really do much, but Climate change is relevant to many of our activities...

- Creating green space in the village
- Working to improve public transport
- Providing feedback on wider council strategies for transport, housing as well as specific feedback on planning applications.

This proposal provides justification to treat climate change as a factor in future decision making.

In particular our green group has been instrumental in rewilding the churchyard, Plastic free Ide and promoting Green Routes for Ide.

[Weir Meadow Working Group](#) - In addition to our orchard project we are also fund raising for Weir Meadow. This is a project developing a sports facility for the village on one of our meadows, with adjoining fields. Watch this space for this project the group is currently considering all kinds of options for the adjoining fields and field edges including growing locally sourced acorns to give us a wonderful supply of local oak trees for the future – watch this “green” space!!

And lastly – a small note about our lovely shop!

IDE COMMUNITY SHOP & POST OFFICE

Our shop stocks well grown, healthy looking plants and we've been selling lots this month. We buy these from New Leaf's Hillcrest Growers in Exminster. They also provided the lovely Christmas wreaths and Poinsettias we sold last Christmas which will be available to order or buy again in December. Ever since the community shop was established in the portakabin, we have bought plants from Hillcrest, both because of the quality of their plants but also because of the vitally important community service they provide which you may not know about.



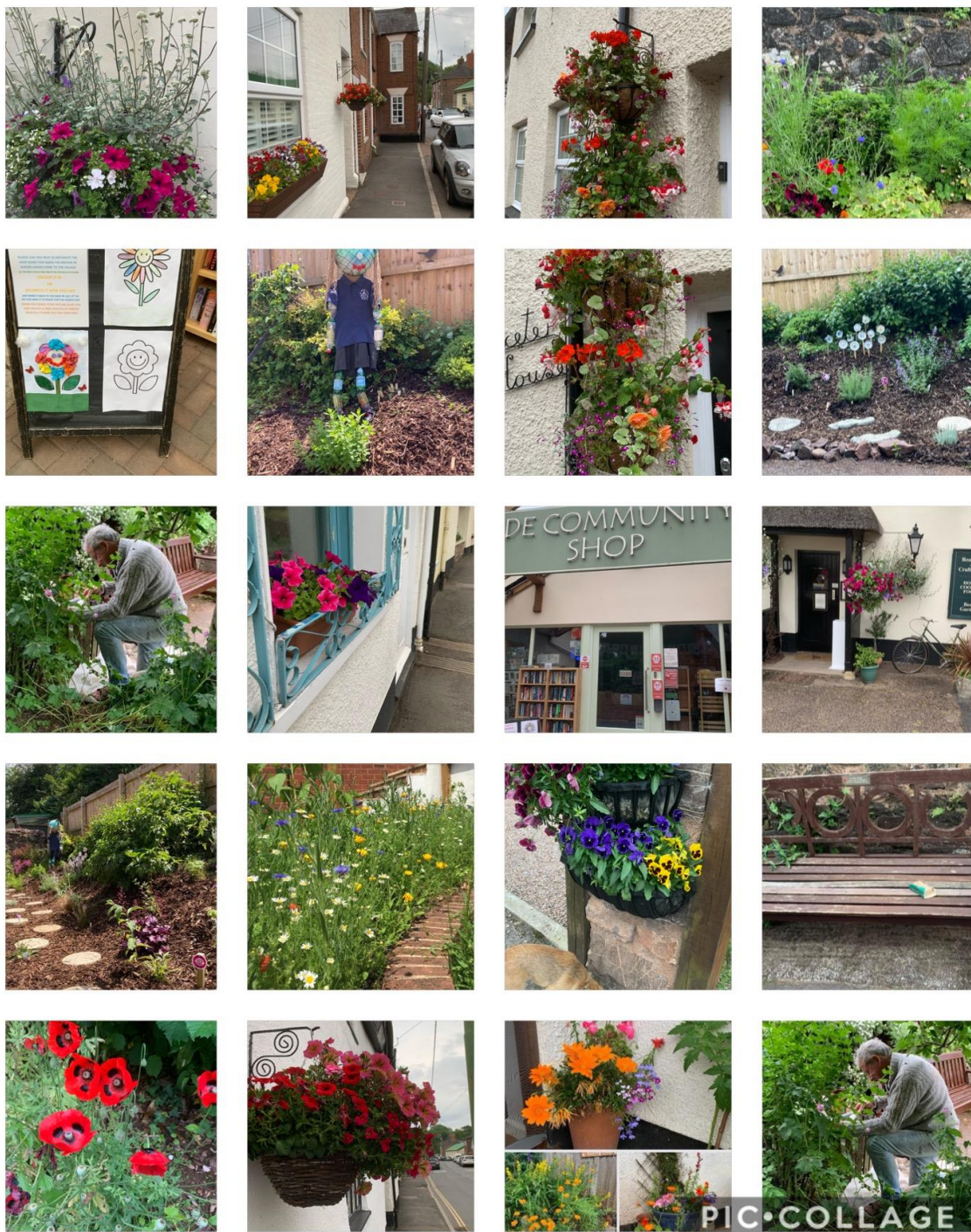
New Leaf is part of Devon Partnership NHS Trust's Vocational Rehabilitation Service. This is a modern service developed from many years of providing therapy, training and supported employment to people living with mental health issues.

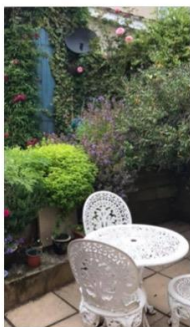
Established in 1990, Hillcrest Growers is based on a 35 acre site and operates as a commercial plant nursery producing plants for the public and private sectors. People are encouraged to become part of the experienced horticultural team where they will have the opportunity to learn and develop many transferable skills, including general nursery work, propagation, potting and planting, retail skills, using machinery and delivery.



It is great to see that a business that achieves so much more than just growing and selling quality plants is really thriving, and is increasingly widely supported by businesses throughout the region.

Our picture gallery... just a few of the pictures shared!

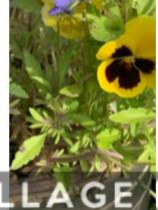
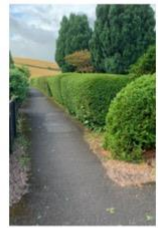




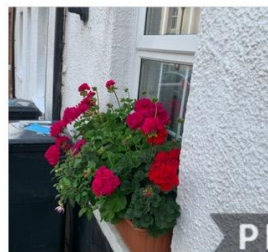
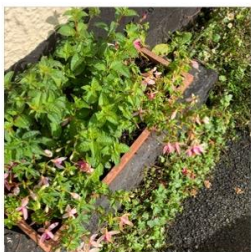
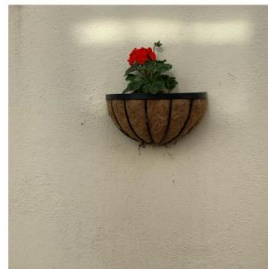
PIC•COLLAGE



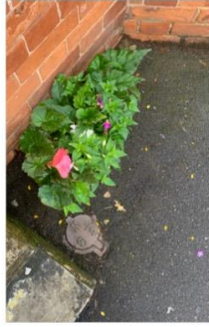
PIC•COLLAGE



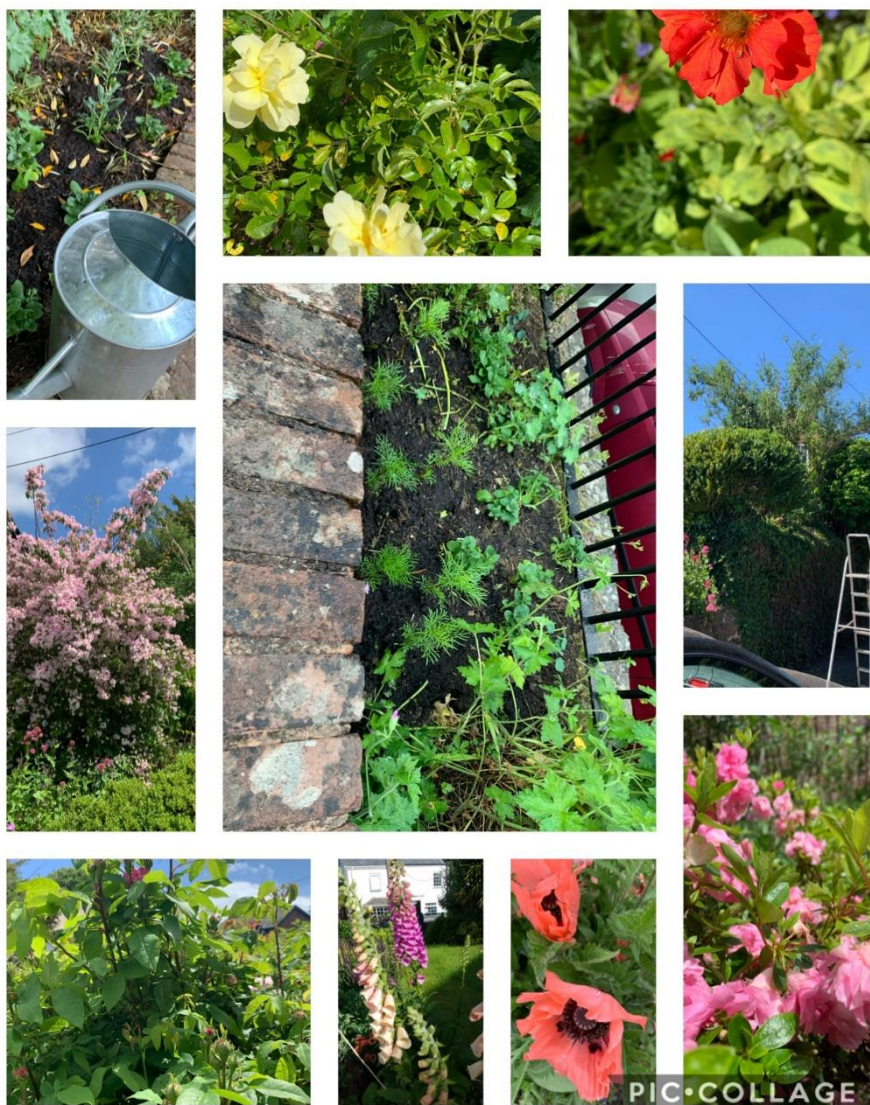
PIC•COLLAGE



PIC•COLLAGE



PIC•COLLAGE



Supporting Facebook and Instagram Pages

@Ide, Devon

@Ide Past and Present

@Ide in Bloom

@Ide Produce Swap

@Wild Ide

@Green Spaces for Ide on Instagram

Produced with big thanks to all our helpers and supporters, The Twinners and Community shop for their kind donations but especially to the Growers ...

Happy Blooming

