



Ide in Bloom

Portfolio

June 2022

## Table of Contents

---

Introduction: After the judging - what happened next .....	3
Village Events for 2021-22 .....	4
Ide Show September 2021.....	4
Christmas Wreath Making .....	5
Ide Seed Swap.....	5
Ide plant swap .....	6
Jubilee Celebrations.....	7
Ide Open Gardens.....	9
Village Projects.....	11
Pynes Victorian Orchard .....	11
St Ida's Churchyard Grassland Management .....	13
Coronation Gardens - Ide Growers.....	15
Weir Meadow Recreation Ground and the Northern Fields .....	16
Tour of Ide.....	18
Ide in Bloom Specials on offer through our Community Shop!.....	18
The Great Ide Doorstep Challenge .....	18
Colouring Competition .....	18
School .....	18
Allotments .....	19
Annex 1 Open Gardens Flyer .....	20
Annex 2 Ide in Bloom 2022 – Bloom Joy.....	25

## Introduction: After the judging - what happened next

---

Ide is a small and friendly village on the SW outskirts of Exeter. We have a population of about 500 people and although we are close to the city, we have a strong village identity and an enviable sense of community.

We have a growing group of very keen amateur gardeners and environmentalists, and we are actively pursuing many projects associated with the natural environment.

This will be Ide's second year of entering the main SW Britain in Bloom competition. We have also entered our Orchard Restoration Project into the It's Your Neighbourhood Awards.

After the competition last year we took a short but welcome breather. It had been quite a frenzy of tidying and clipping in some of the communal areas and it was nice to enjoy some of the planting right the way through until Autumn.

Ide in Bloom was seen as a massively positive initiative. There were lots of lovely comments made by a very wide demographic about the effort Ide had made collectively to enhance the village.

"...I've never seen the village looking so tidy....the High Street is looking lovely ... the cosmos in the planters are wild – they bring me such joy when I drive past them..."

The great thing was that this difference was made by a lot of small contributions whether that was through flowers and horticulture or simply weeding part of the street.

This year there has been a massive focus on village projects, but our bloom objectives remain the same:

- To generate interest and enthusiasm in gardening growing and our natural environment
- To enhance the village
- To bring the community together with community gardening activities
- To promote legacy planting and better maintenance of communal areas
- To test ideas and identify areas that could be planted for the benefit of the environment, wildlife and the community in the future
- And most of all, to have fun

We are extremely lucky in Ide to have great support from our Parish Council. We have a very active Parish Council with a number of working groups many of which contribute to our Ide in Bloom portfolio.

We hope you enjoy visiting our village and our entry demonstrates our strong community spirit but also some of the great environmental and horticultural activities we are currently undertaking.



## Village Events for 2021-22

### Ide Show September 2021

After the Britain in Bloom judging the next event on the calendar was the Ide Show. Our village show is a serious affair with black tablecloths and categories ranging from jams and preserves to best in show. It is planned through Ide Growers, and is alternated with our Open Gardens Event.

The 2021 Ide Show took place on a sunny Sunday at the end of September. We were just coming out of lock down



restrictions so a village event outside was most welcomed. We hosted the show on the village green using as many tents and gazebos as we could lay our hands on in case of rain.



It could hardly have turned out better.

It was the most beautiful day. We had more entries than ever before and the good weather meant lots of people came along to admire the contributions, have a

cuppa and a slice of cake and enjoy the much missed pleasure of chatting with friends and neighbours.

This was planned and executed by Ide Growers but could not have happened without the help of friends who spared their time to put up and take down tents, share their electricity or give up their time to judge the various categories.

The winners and categories judged were:

Preserves: Wendy Fellows;  
Flowers: Wendy Fellows;  
Vegetables: David Williams; Fruit:  
David Williams; Baking: Michelle  
Reynolds; Other Produce: Mark



Thomas; Children: James Wannell; Total points: Sue Cloke; Best in Show: Wendy Fellows (jam)

### Christmas Wreath Making

Although not strictly a gardening project this annual event is run by Mary Bradley and Sue Cloke during December. The wreath making seasonal sessions are always special and undertaken in the most sustainable way possible using foliage from gardens and the surround to make some beautiful Christmas wreaths. We used the Parish Church as the venue. This year we used locally grown foliage included fabulous ivy, eucalyptus, spruce and other evergreens along with dried hydrangea and teasel. A lovely well attended event with mince pies and mulled wine. The cost of this event is about £15, and you get to keep the wreath you make, which is pretty good value considering the cost of similar sessions locally.

### Idle Seed Swap



Moving into spring this felt like the first Growers' event of 2022. This year we took a slightly different approach to the seed swap giving people the opportunity to buy seeds as part of a seed co-operative. This proved massively cost effective especially for those people with allotments or large growing areas. For just £5 up front participants could choose from a wide range of vegetable and flower seeds that we bought in bulk. We carefully shared larger packs and provided a pack for each of the pre-paid participants.

We also gave people the option also to bring along seeds on the day and swap them, or just make a small donation. We received a lot of seed donations that meant there was a massive choice. It was a really successful way of buying seeds and felt very much like a seed "pick and mix"!

As ever we laid on tea and cakes again making the event hugely sociable.







## Ide plant swap



Following on from the Seed Swap Ide Growers held the plant swap a few weeks later in May. This event is usually held in Ide village school. Last year we held the event in a socially distanced fashion outside the village shop. This year due to ongoing restrictions we held this event on the village green. Plants were arranged on long table borrowed from the Parish Church. We arranged the plants according to category, annuals, perennials, vegetables, flowers and exotics.

People were asked to bring a plant to swap or come along chose a plant and make a small donation. It was a lovely relaxed afternoon. We had a large and sometimes unusual selection of plants from banana trees to grasses it was incredibly interesting to see the

number of cactus propagated by some of the younger people in the community. We had every age group represented and again tea and cake was provided!





## Jubilee Celebrations



Whilst the Platinum Jubilee was not strictly a plant or horticultural event it has very much influenced the planting around the village this year. I cannot begin to count the number of red geraniums we have planted in our communal areas! Throughout the village we have tried to keep to a formulae of red geraniums, purple lavender or nemesia and silver foliage. We have used a variation of reds in different locations and the odd rouge pink geranium has popped up here and there!

Planting has been done through our Growers group and has not been without it's challenges! We have been incredibly lucky this year to secure a small amount of funding to allow us to buy plants to dress the village for the Jubilee. We have been very conscious not to waste funds. In particular we plan to lift and propagate geraniums that we buy this year to use in future years. The success of the use of geraniums has been noticed, they are slug resistant and tolerate poor soil that is prone to dry conditions.





We have bought perennials wherever possible to add structure to some of the areas of ground and to replace some of the older plants.



The Jubilee also saw the grand opening of our village orchard starting with Songs of Praise at 10 am, readings, the planting of the Queens Canopy apple tree, coincidentally our 70<sup>th</sup> tree on the plan. Our oldest and youngest residents snipped a ribbon and we followed up with a village picnic. It is such an idyllic setting and is set to become a very well used space. It was a lovely addition to the Jubilee celebrations.

And last but not least to complete the weekend one of the village's keen and skilled gardeners hosted a pop up plant sale. This was particularly well timed and well attended as the lady in question

knew people were home for the Jubilee. The attendance didn't disappoint, and happy customers went off with boxes of good quality plants and their fill of tea and cake. The sale made £245 for village projects and meant that spare plants didn't go to waste.

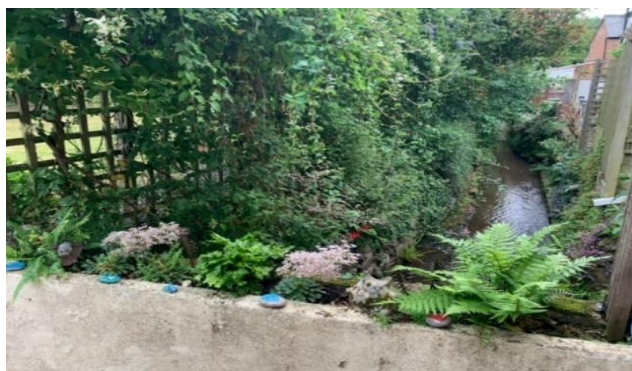




## Ide Open Gardens

Ide open Gardens brings us right up to date with the formal events. (Please see leaflet attached in Appendix 1).

This event really felt like the gardening event of the season! 16 gardens around the village were generously opened to the public between 10am and 4pm on Sunday 19<sup>th</sup> June.



It was such a lovely event to be part of.

Gardeners took great pride in ensuring their gardens were pristine.

I don't think I've seen the local village gardener looking quite so stressed.







There were tales of lawns being trimmed with edging scissors and preparations seemingly started weeks beforehand.



The event was seamlessly planned by Ide Growers who not only professionally advertised the event but frugally recycled last years signage to ensure people knew where they were going and which gardens were open to visit. Some gardens served refreshments others sold plants. In total the event raised over £1000 through refreshments and ticket sales. We estimate that we sold about 100 tickets to visitors.





## Village Projects

---

### Pynes Victorian Orchard

This project has been entered for an Its Your Neighbourhood Award. The project has gone from strength to strength this year, much of our village energy has gone into getting this space working as an orchard that can be used by the public.



In the last seventy years Devon has lost about 90% of its traditional orchards. Every Devon farm had its own orchard, with

historical taxation figures showing that in 1789 there were 22 farms of varying size in the parish of Ide. Today there are six, and as the number of farms has declined, so has the number of orchards.

An aerial snapshot of Ide in the spring of 1800 would have revealed a tiny island floating in a sea of pink and white blossom. There are remnants of this sea: a strip of land behind The College; a paddock behind the Huntsman Inn; solitary, gnarled fruit trees in back gardens around the village; and, largest of all, the Victorian Orchard.



Originally part of Canns Farm, this orchard, despite its name, predates the Victorian era by several hundred years and could have been first planted in medieval times. The fact that it still lies within its original boundaries adds to its historical importance.



The Victorian Orchard lies across the road from Pynes Farm, on the right as you go south up the hill towards Dunchideock. It remains one of Ide's oldest traditional fruit orchards, neglected for two generations, yet still in its original form. Its 3.65 acres of sloping field, facing north, overlook the village. It contains a number of old apple trees, many fallen and dead. The Church

Commissioners own Victorian Orchard and, stimulated by discussions about the Ide Neighbourhood Plan(2018) which formally designated the Orchard as Local Green Space, have agreed to sell it to the Parish Council for use as a community orchard.

There are over fifty community orchards in Devon. They have become popular as places for friends and neighbours to come together for seasonal events such as apple

pressing or hay making; and they provide unique spaces for recreation, productive activity, and relaxation. Local, common, public space is something we are very short of in Ide. Community orchards are a fine resource for schools seeking outside classroom activities. They offer the chance to maintain and increase biodiversity, provide local fruit and to resist property development.



This traditional orchard is different from a tightly planted, modern orchard: less intensively managed, and more in common with woodland, pasture and parkland. It typically consists of fruit trees and grasses, with scrub round the edges and hedgerow. This mix of habitats adds up overall to something more valuable than the sum of its individual parts.

In November 2017 the Parish Council set up a Community Orchard Working Group to conduct negotiations with the Church Commissioners; plan a fund raising campaign; gather ideas for the use of the orchard which fit the needs of Ide's residents; and review how best to manage the orchard, its trees and boundaries.

The Orchard had been neglected for many years but not anymore.

An ambitious strategy to raise the money to buy the orchard, along with Ide's other major project, Weir Meadow Recreation Ground, has been led by the Parish Council through its joint Projects Fund Raising Group - details of which are regularly reported on the Parish Council's pages in the Ide Times, and on its own website.

The fund raising campaign has been hugely successful. The Orchard was purchased on 29<sup>th</sup> April 2022 and made accessible for public use for the first time from that day. Ide Community Orchard, is now an open green space for everyone to use and enjoy, made possible by the village by giving so generously to the campaign, to allow us to purchase this beautiful piece of land for the community, for keeps.



With generous grants from the Royal Horticultural Society and Viridor, the Working Group has installed staked, wire mesh tree guards to protect the saplings planted in January 2020. Dormouse nesting boxes have been sited around the perimeter hedge and little owl boxes in larger trees. We have set up picnic tables at various points around the orchard. New gates have been installed, along with a dog waste bin. We hope to host a flock of sheep for a few days during April to mob graze the grass before the orchard opens.

The Orchard is now open for everyone to visit, walk in, have a picnic, and enjoy the view over the village. It's looking a picture with the trees in full blossom, and the grass cut. It has a character all its own and - at the risk of fancy - gives a sure sense of calm and beauty.

Our thanks to James Romain and Simon Topliss for their help with path cutting and fencing; and to Andy Bragg, and Mike and his tractor, for their hedging and



grass cutting.

The Parish Council owns the freehold to the land; and now has the task of running it, through the Ide Community Orchard Management Group.

There's a notice on the gate setting out the guidelines for using the Orchard.

- \* The Orchard is open every day of the year from dawn until dusk, but is closed from 10pm.
- \* We will give lots of notice when access to all or parts of the Orchard may be restricted for maintenance, grazing or grass cutting.
- \* You may walk your dog in the Orchard, but please exercise close control at all times and clean up after your dog, using the waste bin at the entrance to the Orchard.
- \* Commercial dog walking is not allowed in the Orchard
- \* The Orchard is not suitable or safe for cars or bikes.

### St Ida's Churchyard Grassland Management



Last year saw a new grass cutting regime put in place for St Ida's churchyard.

The grass in the churchyard had its main cut in the second week of August. After allowing the cut grass to dry a team of volunteers raked it up, with two large trailer loads being transported off to West Town Farm for composting.

It was clear from the raking that there was quite a build-up of 'thatch' at the base of the grass

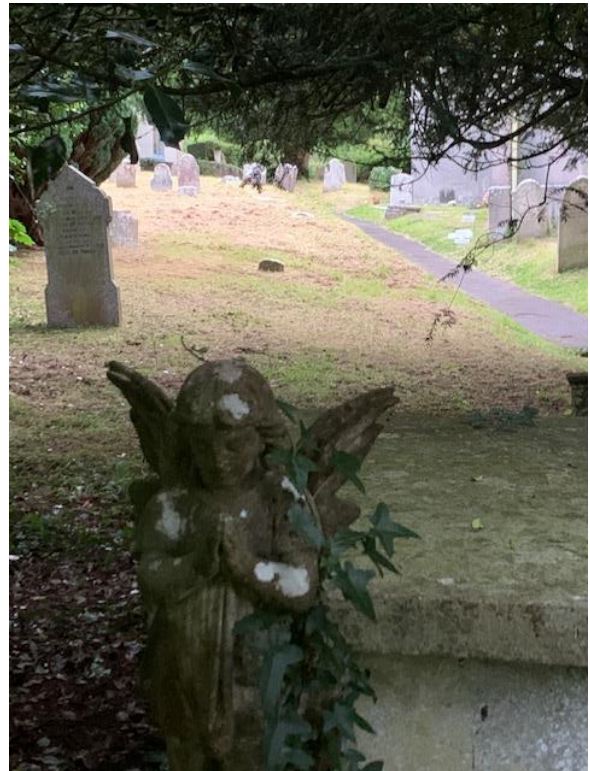
from previous years, as material was not removed from the site. It will take a bit more effort to clear this, but exposing the soil surface will allow seeding with additional wild flower species to take place in the coming month. In August the seed of the semi-parasitic Yellow Rattle was collected from meadows at Ashton and this will be sown in some areas of the churchyard to reduce grass growth. Once seeding has taken place, further mowing will be undertaken by Teignbridge District Council up until the winter. It will certainly be interesting to see what changes this work brings to the vegetation and wildlife of the churchyard over the next year or so.

The main aim of the new grass cutting regime is to increase wildflower diversity and the overall wildlife value of the churchyard. There was definitely a flourishing of some flowers last year, such as hawkweeds and cuckoo flower and an increase in butterfly numbers, but docks, cow parsley and competitive grass species dominated.

One year on, and with the benefit of last year's work, a few changes are being made this year. The main change will be an earlier cut (late June/early July) to the main part of the churchyard. Grass growth during the late spring and summer of 2021 was

rapid and strong resulting in a tall, lush sward that collapsed in the late summer wind and rain. This made the late summer cut and clearance difficult, so an earlier cut should help prevent this. Removing the cut grass will still be a challenge, but with support, will hopefully be undertaken.

The paths and areas around the church will continue to be cut on a monthly basis during the spring-summer. The vegetation in the eastern side of the churchyard will be left, with a cut planned here for later in the summer, as it was last year, and as is traditional for wildlife-rich meadows. The focus here will be to decrease the overall vigour of the grasses and dominance of plants like dock and cow parsley to enable other less competitive plants to flourish. This may require some seeding and additional grass cutting in the autumn. Any help with grass clearance / raking is always welcome and call-outs will be made in the Wild Ide / Ide Village Facebook group.





## Coronation Gardens - Ide Growers

We have continued to work in our Coronation Gardens and whilst the work in this communal area is nowhere near complete or up to RHS standard we are confident that we have the support of the Parish Council and will bring this area back into good condition over the forthcoming year.

We have tried to make the most of the planting areas where ever possible but there is still a lot of ground which is inaccessible due to overgrown large shrubs. We plan to cut these areas back but need to do this gradually and carefully preserving as many plants as

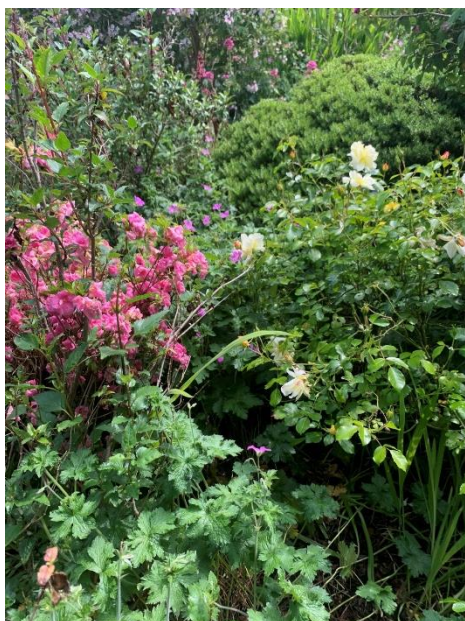


possible and at the same time being able to deal with the waste materials appropriately. Benches were painted last year and will be scheduled for a repaint in 2023.



The work in this area of the village has focussed on the removal of pelargoniums, about 3 dumpy bags have been removed to date.

These have proved to be very invasive at the detriment of other plants in the garden. We have found rose bushes - and have replaced one which had died. We have also recently unearthed a rockery which is characteristically very dry. We plan to replant this with suitable alpine but this area of the garden will need further work before this can happen.



We know that the garden was planted about 15 years ago and at the time a lot of work was put in to design the garden as an interesting space for visitors to the village to enjoy. We are devastated to have lost one of our apple trees (all old Devon cider apple varieties I'm told) to woolly aphid. Ide Parish Council have removed this. Seeking advice from one of the orchard group we fear that we may need to lose another tree in the area to prevent losing all three. The trees have grown and become dense and being planted so close together there is not enough room or water.

There is still much work to do in this area and we plan to form a regular monthly gardening group to

gradually bring this back to life.

## Weir Meadow Recreation Ground and the Northern Fields

Public open space, parkland, a recreation ground: such assets are rare in a rural community. Ide is a tightly packed village, in a managed agricultural landscape. Vehicles crowd its streets. The village green, small and bounded on two sides by road, is the only open space for people to gather.

So when the opportunity came to acquire a flat, six acre field on the edge of the village, for the village, the Parish Council determined to do just that: to provide open space for relaxation, recreation and sport, publically owned, for public use, for the first time in Ide's history. In 2017 the owners, the Church Commissioners, accepted our offer to buy Weir Meadow. In 2018 the proposal to create a recreation ground on it passed into planning law in the Ide Neighbourhood Plan. In 2020 we secured planning permission for change of use from agriculture to a recreation ground. Owning the Northern Fields themselves will allow us to protect an additional section of land on the edge of the village from development; ensure it is used in an ecologically positive way; and provide public access with a new



footpath, at the same time as

solving the problem of agricultural access across Weir Meadow. Access to the fields down College Lane poses no problem for the size of vehicle needed to farm these fields sustainably. The Commissioners agreed to sell. In October 2019 we agreed a price, and the two fields are now part of the project, along with Triangular Field.

In March 2021 we signed an option agreement with the Commissioners, allowing us three years to raise the funds, certain that the purchase is ours to make at any point during that period.

We are also fortunate, for the Church Commissioners have honoured our long term vision for the community. They backed us over the last four years by sticking with negotiations for an option agreement that both of us could accept.

Phase I of the project, to secure an option to buy and obtain planning permission, is complete. Now in Phase II we have to raise £178,000 to buy the land. The option agreement extends for three years until March 2024, but the shelf life of planning permission chiefly constrains our time. By 16 October 2023 we must have bought the land, satisfied the pre-commencement planning conditions, and made a material start on development works. A Joint Projects Fund Raising Group has formed to



drive and co-ordinate fund raising efforts for Weir Meadow and Ide's other major project, the Community Orchard.

Chuffed to bits would cover the mood at the Extraordinary Parish Council meeting held on 2 March 2022. The winter consultation exercise and survey showed 92% support for the projects, and 87% support for borrowing the money to get us over the line. Given this level of enthusiasm, and having already raised sufficient funds by donation to buy the Orchard, the Council resolved to exercise the option agreement to buy the Orchard; and to apply for approval to borrow the balance for Weir Meadow and the Northern Fields. Devon Association of Local Councils (DALC) have supported our application, and on 14 March the documents went to the Secretary of State for Levelling Up, Housing and Communities seeking borrowing approval.

We've now had our loan application approved and will proceed with the option agreement as soon as possible.

In the meantime, the working group is preparing an application to the National Lottery Community Fund awards up to £10k for fencing and planting as per our planning permission; creating a footpath; signage; filling the hole at the entrance; levelling and seeding; and bird and mouse boxes. We will become eligible for this grant once we own the land. It is also taking expert advice on how best to utilise and let the Northern Fields once we own them.

## Tour of Ide

---

### Ide in Bloom Specials on offer through our Community Shop!

Our fabulous Community Shop continues to be at the heart of our village. Run by volunteers it's very supportive of village initiatives. It supplies plants grown from a small local grower.

### The Great Ide Doorstep Challenge



At the time of writing this portfolio we have about half a dozen households and groups signed up to the doorstep challenge – sign up through our shop. Whilst this seems like a small number of people we are thrilled to even have one household take part!! For just £2 people can enter the

competition to win £50 of Ide Shop vouchers, all they have to do is dress their doorstep with blooms or form a neighbourly group to tidy and plant part of the village. This is designed to be fun and will be judged on the 2<sup>nd</sup> July. Fingers crossed for some good, fun entries.

Colouring Competition - The shop is again running an Ide in Bloom colouring competition. This will get the youngest members of the community involved with the Bloom and aware of difference planting and growing flowers can make to their surrounds and well being. Entries will be judged before the end of term.

### School

Our village school has spent the year reopening after a very challenging time over the pandemic. They have really valued the outdoor space and have continued to enjoy the local environment – they are very much linked with Our Orchard project and West Town Farm that specialises in Organic Arts. They have an active garden group, run by parents Gemma Webb and Kate Morley one of the parents. The garden group has planted the planters around the school. Kate has also planted and developed a sensory garden which has grown and has been a very welcome addition to the school grounds.





## Allotments



Our allotment community continues to thrive. They continue to be a challenging space in terms of pests, including rabbits, badgers and other wildlife but also have the challenge of location. The allotments continue to be an active community – many of whom were seen at the seed swap earlier in the year. They are currently looking at ways to work together to get manure to the site – the allotments are to the rear of the school so access is tricky.



In every street of the village you will find a moment of *Ide in Bloom* joy! A selection of village highlights are provided in Appendix 2.

We hope you enjoy visiting our village. We know that our entry will not be perfect but we are very proud of all our village has achieved. As ever we continue to be a fantastic community supporting our village projects continuing to make the village a beautiful place to live.

Happy Blooming

Ide Growers

## Annex 1 Open Gardens Flyer

---

**Hello and welcome to Ide Open Gardens 2022.** It's five years since we held the last one. In 2020, in lockdown, we produced a magazine version - but it's not quite the same as having a good old wander around other people's gardens.

We have sixteen different gardens for you to enjoy today and you are free to look around them in any order you like using the map on the back page and the information about each garden as your guide. Stay as long as you like in each one, but please try to see as many as you can. Be sure to stop in one (or more) of them for tea and cake!

Huge thanks to all of our gardeners and helpers today. Without them it would just be a walk around the village.



Each garden is marked with a sign like this and a letter so you will know you are in the right place.

The map and guide show where toilets can be accessed and where refreshments are being served, as well as which gardeners are happy to welcome well-behaved dogs on leads.



Toilet can be accessed in this location



Refreshments served in this garden



Well-behaved dogs on leads welcome in this garden

Most gardens are open from 10am until 4pm, but please note that two of the gardens have shorter opening times.

**Gardens G and H (38 and 40 High Street) are open from 1-4pm**

**Garden J (Earles Court) is open from 11:30am-4pm**

Please take great care in the gardens as there may be uneven paths and open water. Please supervise children closely at all times.

While you are in the village, why not enjoy lunch in one of our three local pubs which all have their own beer gardens - The Twisted Oak (just over the 'Curly Wurly Bridge' near the entrance to the village), The Huntsman (at the bottom of the hill) and The Poachers (near the roundabout at the top). Alternatively, you could enjoy a picnic in Ide Community Orchard at the top of the village (see map) - it comes complete with tables and fabulous views. Or just eat cake all day in the gardens!

Proceeds from today go to support projects around the village - including our ambition to purchase some land to convert into an area for sports facilities. Thanks to Ide Community Shop and Ide Parish Council for their support with publishing costs.

Enjoy the day!

**A little about the participating gardens, as described by the gardeners themselves:**



**A. 5 Cross View Terrace – Olivia Ambrose**



A large, open, front garden overlooking the fields to the east of the village, planted with various shrubs and flowers - with an uneven lawn and decking for BBQs and socialising.



A work in progress as they all are!

I hope you like the Cross View Terrace access road. From a neglected weed-strewn patch, I started planting this with bits and bobs gathered from the wild or other people's gardens about 2 years ago - it is coming on really well now.

Well behaved dogs welcome and refreshments available.

**B. 15 Fore Street - Ian & Sue Campbell**



Many of our gardens will have a long history and maps show that our garden probably dates back over several hundred years. Our triangular garden is divided into a cottage garden with lawn and flower borders; a fruit and veg area and a pond make up the remainder. The garden is at its best in the spring but hopefully there will still be a lot in bloom in mid-June.

**C. 14 Fore Street - Jo & Dean Jeffrey**



Access is gained via the alleyway between 16 and 18 Fore Street. Enter through the second wooden gate on the right-hand side which leads to a narrow path which takes a sharp right turn. Go through a second gate to enter the garden. You will walk through a rusted metal archway which is adorned with beautifully scented rambling roses leading onto the patio at the back of the house. This is surrounded by some raised borders mainly planted with cottage garden plants including delphiniums, foxgloves, geraniums, crocosmia, anemones, and peonies. There are also a few additional pots dotted around. A couple of steps take you up onto the lawn which is in very poor condition due to the dominant trees on the left side zapping it of any moisture and goodness. The village stream runs along the right-hand side of the garden shielded by a trellis fence covered in honeysuckle, wisteria and clematis. Well behaved dogs welcome.

**D. 20 Fore Street – Lisa Higgs**

Access is down the alleyway of number 22 and through the first gate. Visit a space dedicated to flowers and guinea pigs. A 10ft square is just enough to make a beautiful space to sit outside. No dogs please (because of the guinea pigs).

**E. 2 The College - Richard and Liz Sharman.**



A family garden that has evolved over 30 years including lawns, borders, cottage garden, orchard and kitchen garden. New for this year are a wildlife area and low maintenance Mediterranean rockery. Well-behaved dogs welcome.

**F. 12 High Street - Paula & Julian Burton-Perrett**



We bought our house 20 years ago with a tiny courtyard garden reaching to approximately the end of our current patio. But over the years we have been lucky enough to acquire more ground. Much of what you see we built from scratch; the extended lawn was seeded last August when we also built the raised beds. It is still a huge labour of love - especially our perennial bed which changes each year. It's always a surprise to see what returns next season.

Well behaved dogs welcome. Refreshments and downstairs loo available.

#### **G. 38 High Street - Vron Lee**

Entrance via The Hams (ie. the back)



Last year I did 'wild flowers' - that's when I discovered that cornflowers grow astronomically high! The wild garlic this year has taken over and the cornflowers are only just emerging

(I think!) but there are some poppies coming up too and marjoram by the ton and plant pots.....and delicious raspberries growing through from a neighbour's garden!

Refreshments available. \*\*\*Open from 1pm.\*\*\*

#### **H. 40 High Street - Nigel & Imogen Walsh**



Access to our garden is either from the High Street (front of house) or from the back passageway off The Hams opposite 10 The Hams. There will be balloons by our entrance at the back and an Ide Open Gardens sign. We have lived at 40 High Street for 42 years and our garden has undergone several evolutions during that time. It's essentially in four sections: a shady area, with ferns, near the house; our main flowerbeds and pots area with small water feature; a sitting area with gazebo; and a kitchen garden area with raised beds and fruit cage. Shaking the many seed heads in the autumn and seeing what comes up in the spring is part of the excitement of gardening! Love-in-a-mist, red campion, and euphorbia abound. It's a bee and butterfly-friendly garden with sweet peas, geraniums, cornflowers and cosmos adding to the summer colour. Our pillar rose provides a central focus.

\*\*\*We are open from 1pm.\*\*\*

#### **I. 58 High Street - Jane Rotinoff**



This a long, thin, higgledy-piggledy cottage garden with 6 neighbouring properties. It has undergone periods of concrete, neglect, children, chickens, parking issues, pet burials, ponds and several transformations in the nearly 50 years that I've had it. This latest transformation is heading towards some self-sufficiency with most new plants having to earn their keep by being edible!

I have an eye for quirky additions to the landscape and love any literary references to gardening that you'll see about the place.

Refreshments available. No dogs please.

#### **J. Earls Court - Laura and Doug Bell**



(Entrance on the corner of Halscombe Lane & Westown Road - just before you reach the cricket pitch.)

The borrowed landscape surrounding us gives beautiful views of the Ide countryside and makes the garden feel as though it is in the middle of rolling fields. We moved here 7 years ago and the house and garden are very much works in progress. The main garden has lawns, flower beds and seating areas and a number of mature trees and shrubs as well as newer ones we have planted. The kitchen garden is our focus this year. We are currently rearranging the layout, replacing a number of raised beds and creating new paths, having previously put in a large wooden fruit cage and two small greenhouses, created a grass and wildflower area and planted vines and fruit trees. The back section of this garden, where we have also planted new trees, is used as a large run for our chickens and is purposely left as 'semi wilderness' to encourage wildlife.

Refreshments served & well-behaved dogs welcome.

\*\*\*Note open 11.30am onwards\*\*\*

#### **K. The Halt, 1 St Ida's Close - Peter & Sue Cloke**



The Halt as the name suggests is on the site of the Ide railway station. It's a one-acre site with the back lawn covering the old goods marshalling yard and bordered by the old railway embankment.

We have opened the garden up big time, establishing vegetable, fruit and flower beds as well as a chicken run and the garden has without doubt one of the best views in Ide.



Refreshments including Pimms available.

Well behaved dogs welcome.

**L. 1 Station Road - Mark & Rachel Thomas**



Our garden is a family space with shared access for neighbours – a throw-back to a more communal time. There has never been a grand plan (or any plan at all for that matter!) for the planting – just what friends and family give us, what we can grow from seed, acquire at the plant swap, divide from what was already here.... or whatever looks good at the garden centre. We are constantly moving things around as we learn where they do best. The bed at the end by the trellis was new in 2021 and has largely decided for itself what it wants to grow! We did not plant the fox gloves, the feverfew, the mallow or the green alkanet at the back, which is probably why they look so at home. The whole garden is based on perennial plants and virtually disappears in winter, so the joy is in seeing everything exploding into life in the spring and summer.

Up the path from the end of the garden you come to a cutting through the old railway line and a strip of land, the far end of which our neighbour and friend Pete very kindly allows us to cultivate. Our bit starts just after Pete's ingenious bicycle wheel bean support sculpture. The ponds at the end provide the perfect watering hole for the bees who live in the hive up on the bank. Each year we get 20 -30 pots of the most delicious honey. Hopefully the wild flowers on the bank which Pete planted and manages will be at their best in June.

Toilet accessible through the front door of our house. Refreshments available and well-behaved dogs welcome.

**M. 76 High Street - Sylvia Moore**

Accessed via 1 Station Road.



This garden was originally a man's productive garden with rows of vegetables and a few flowers for the kitchen. As I began to takeover, areas of grass have made a more relaxed outlook for all of us on this terrace. I grow flowers for everyone to enjoy.

**N. 59 High Street - Andy & Alex Goodman**



In the ten years we've had the garden we've tried to create a light, open space with emphasis on colour and shape. Much of the layout is formal but we try to make space for nature and the planting is purposely intended to look as natural as possible. The garden is at its best in spring and late summer.

We aim to be as self-sufficient in fruit and vegetables as possible, so the kitchen garden is at the very heart of the garden. The polytunnel was built in 2014 and has kept us in year-round vegetables since. We switched to raised beds in 2020, which has increased productivity and made the veg plot easier to manage. The younger fruit trees are now producing well, keeping us in apples until around March. The lower lawn area is used for football and other games during the summer, but we leave areas of grass uncut for butterflies, moths and other insects. We also manage the hedges on a rotation, which

provides habitat for birds. Eight bird species have nested in the garden this spring.

Well behaved dogs welcome.

**O. 61 High Street - Sarah & Colin Tiley**



This garden is well loved - with veg and flowers jostling for position. It's a space for family, BBQs and enjoying the sunshine. Like many gardens, it has its triumphs and setbacks, but that is all part of the fun. Well behaved dogs welcome.

**P. 63 High Street - Elaine Lethbridge**



Because it isn't attached to the house and down the next-door neighbour's garden path it is like a secret garden. It is private and very pleasant to just relax in. It has the sun from sunrise to sunset making it a little haven. It is hard work but so worth it with the many shrubs and artefacts adding interest. Well behaved dogs welcome.

**Q. 2 Pynes Cottages - Clare & Jack Frost**



The main attraction of this garden is the view. We continue to make the garden bee friendly while also only planting items that are marked as 'hardy perennials' as we are both a north facing garden and possessed of a colder climate than those further down the hill.

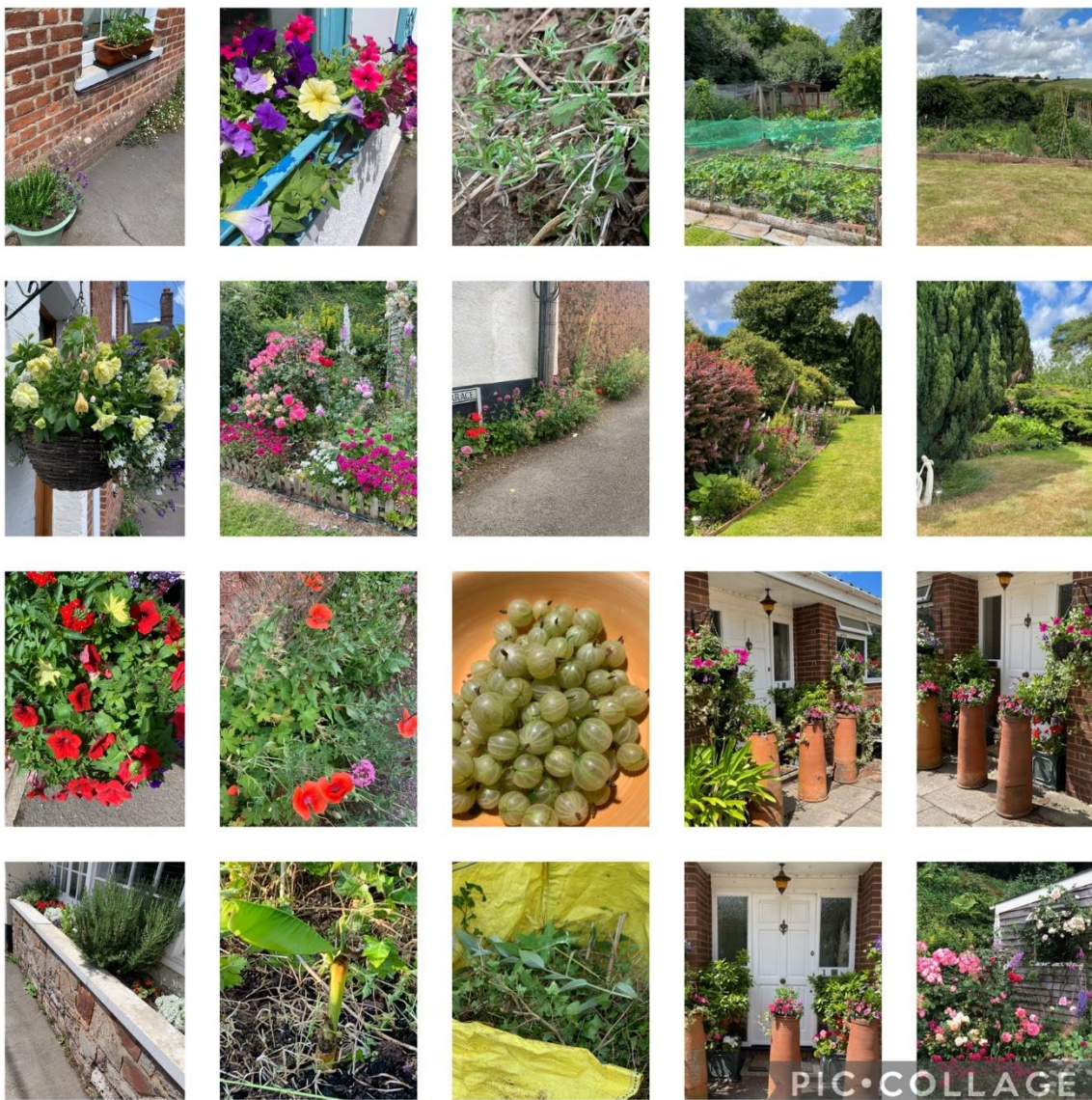


The gardens can be accessed by walking to the end of the narrow path from the road through the gate at the end. There are a few steps to navigate. Visitors will be able to enjoy sugary snacks, drinks and even a pint from the keg of beer in the garage. Well behaved dogs welcome.

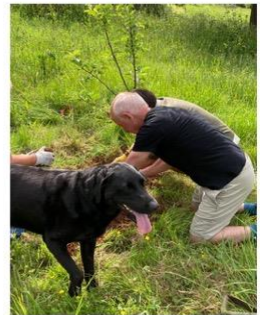


## Annex 2 Ide in Bloom 2022 – Bloom Joy

---











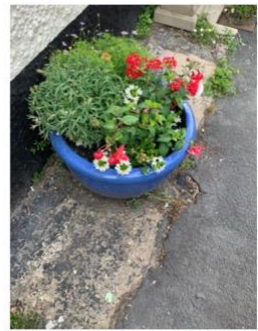
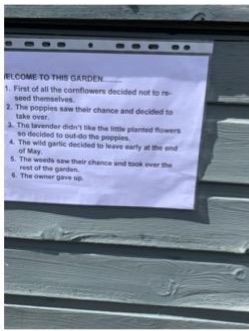
PIC•COLLAGE





PIC•COLLAGE









PICCOLLAGE